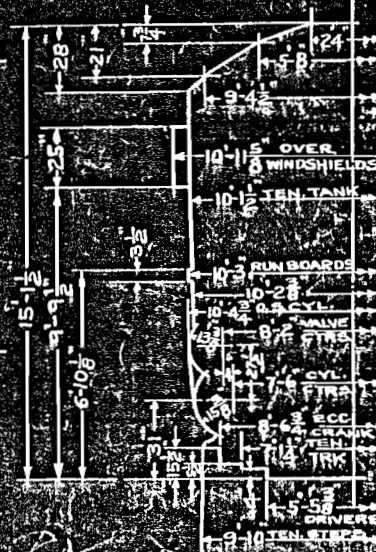
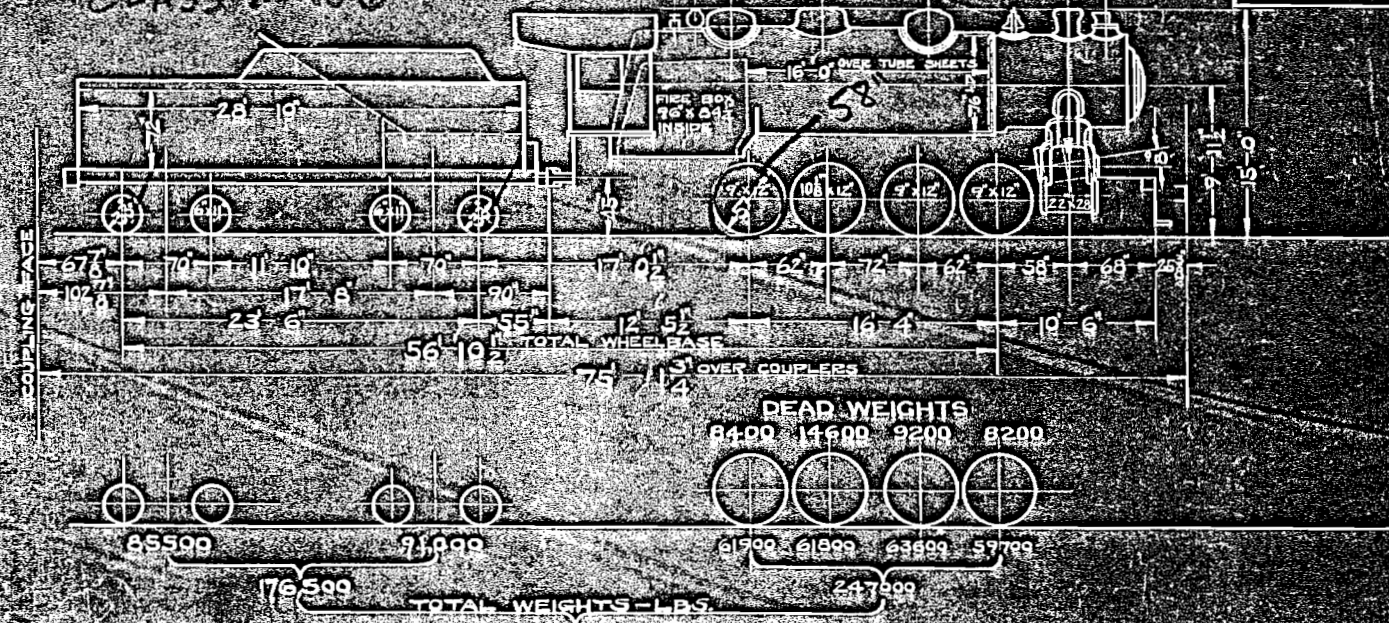


ENGS. 3600-3609 CLASS 44 LOCOS.
 3-CYLINDER DIAGRAM
 SK. Nº 5999 A

CLASS W-100



ALL WEIGHTS FOR ENGINE AND TENDER IN WORKING ORDER

CORRECT
Alvin C. ...
 ME

APPROVED
L. ...
 ME

ITEM	BOILER				DESIGN DATA	GENERAL DATA
	HEATING SURFACE	LENGTH	GAUGE OR THICK.	DESIGN DATA		
1	BOILER TUBES - 239 SPACING 2 1/2"	188'	16'-0"	2"	CALCULATED EVAPORATION LBS./HR.	BOILER PRESSURE 200 LBS.
2	BOILER FLUES - 38 SPACING 1/2"	87'	16'-0"	5 1/2"	TUBES @ 9.60	TRACTIVE EFFORT 60600 LBS.
3	TOTAL TUBES & FLUES	2862'			FLUES @ 11.23	FACTOR OF ADHESION 4.08
4	FIREBOX PROPER	186'			ARCH TUBES @ 55	MAX. CURVATURE 25'
5	COMBUSTION CHAMBER				COMBUSTION CHAMBER	ENGINE TRUCK SWING
6	ARCH TUBES - 4	26'	8'-3"	3"	FIREBOX @ 55	TRAILING TRUCK SWING
7	TOTAL FIRE BOX	209'			TOTAL EVAPORATION	COAL CAPACITY 13 TONS
8	TOTAL EVAPORATING HEATING SURFACE	3091'			ST. CONSUMPTION (20.5 x 2613)	WATER CAPACITY 10000 GALS.
9	TOTAL SUPERHEATING HEATING SURFACE	774'			BOILER FACTOR	STOKER
10	TUBE SHEETS 1/8" FT. 7/16" BK. 1/2"				FIREBOX H.S. TO GRATE AREA	VALVE GEAR WALSCHAERT
11	GRATE AREA		56.150 FT.		TOTAL H.S. TO FIREBOX H.S.	SUPERHEATED THROTTLE CHAMBERS
12	WEIGHT WATER 2 1/2 GAUGES				TOTAL H.S. TO SUPERHEATER H.S.	MAX. CUTOFF 54.4%
13					ASH PAN AIR OPENING	
14					GRATE AREA THROUGH FIREBOX	
					FRAME CTRS. 41	FRAME WIDTH 16'

JAN. 2 1929. N. A. H. & H. R. P. CO. MECHANICAL OFFICE

RE TRACK INC.