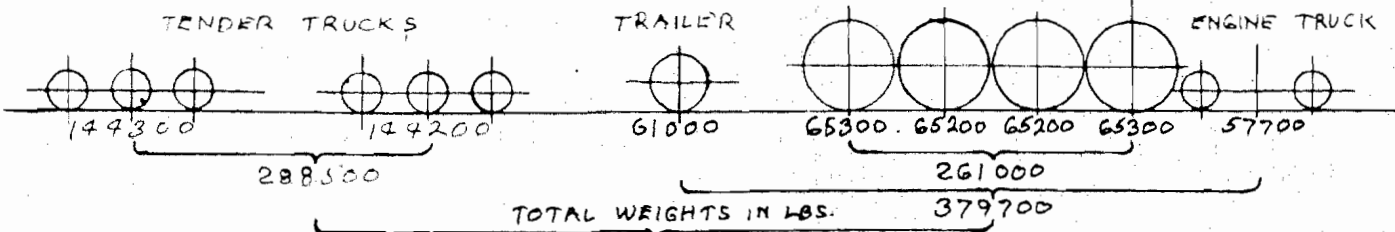
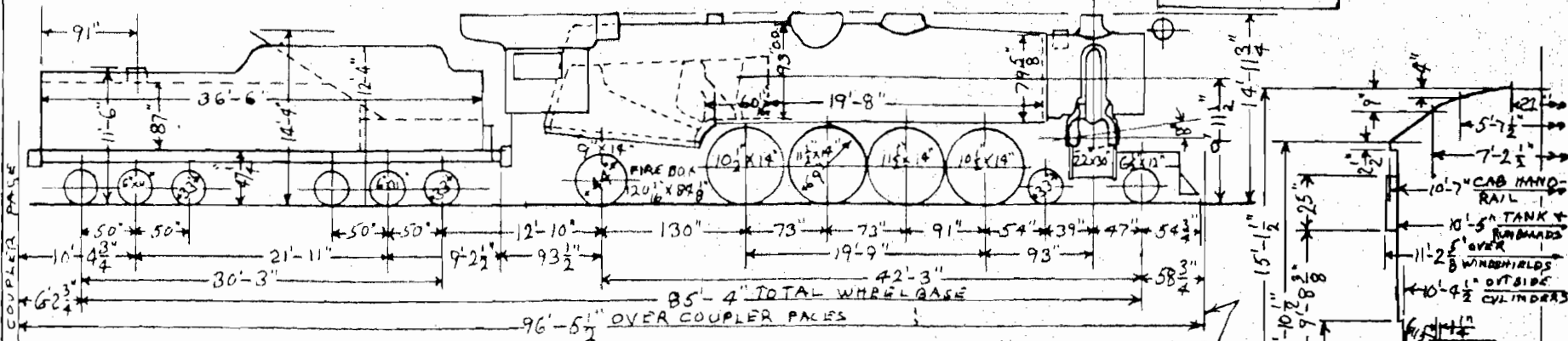


3-CYLINDER



B39

ALL WEIGHTS FOR ENGINE AND TENDER IN WORKING ORDER

CAB

1/31/62

ITEM	BOILER	HEATING SURFACE	LENGTH	DIA.	GAUGE OR THICKNESS	DESIGN DATA	GENERAL DATA
1	BOILER TUBES-32-SPACING 1/16"	369	19'-8"	2 1/2"	12 MIN.	CALCULATED EVAPORATION LBS. PER HR.	BOILER PRESSURE 265 LBS
2	BOILER TUBES-14-SPACING 1/16"	231	19'-8"	3 1/2"	11 "	TUBES-2 1/4" DIA. @ 8.8 LBS. 3247 LBS	TRACTIVE EFFORT 71100 LBS
3	BOILER FLUES-170-SPACING 1/16"	3051	19'-8"	3 1/2"	11 "	TUBES-3 1/2" DIA. @ 9.3 LBS. 2934 LBS	FACTOR OF ADHESION 3.69
4	TOTAL-TUBES & FLUES	3671				FLUES-3 1/2" DIA. @ 9.3 LBS. 28374 LBS	MAX. CURVATURE 19°
5	FIREBOX PROPER	853				FIREBOX @ 53 LBS. 12373 LBS	ENG. TRUCK SWING 3 1/2"
6	COMBUSTION CHAMBER	101				COMBUSTION CHAMBER @ 55 LBS. 5533 LBS	TRAILING TRUCK SWING 6 1/4"
7	SYPHONS-2 FIREBOX-1 COMB. CHAMBER	93				3-SYPHONS @ 33 LBS. 5223 LBS	COAL CAPACITY 18 TONS
8	TOTAL-FIRE BOX	1027				TOTAL EVAPORATION 37110 LBS	WATER CAPACITY 16000 GALS
9	TOTAL-EVAPORATING HEATING SURFACE	4091				STEAM CONSUMPTION (3466 x 208) 71968 LBS	SUPERHEATED THROTTLE AMERICAN
10	TOTAL SUPERHEATING HEATING SURFACE	1736				BOILER FACTOR 79.2%	VALVE GEAR WALSCHAERT
11	TUBE SHEETS-FRONT 3/8" BACK 1/2"					FIREBOX HEATING SURFACE TO GRATE AREA 6.0	MAX. CUT-OFF 89.4%
12	GRATE AREA		20.2 SQ. FT.			TOTAL EVAPORATING H.S. TO FIREBOX H.S. 4.98	STOKER HT-2
13	WEIGHT OF WATER AT 2 1/2 GAUGES					TOTAL EVAPORATING H.S. TO SUPHT'G H.S. 2.83	HEATER ELESKO
14						ASH BOX AIR SUPPLY 105%	SMOKE BOX CAST STEEL
15						FRAME CENTERS 47"-WIDTH OF FRAME 6"	PI LATERAL DRIV. BOX 3/4" PLAY