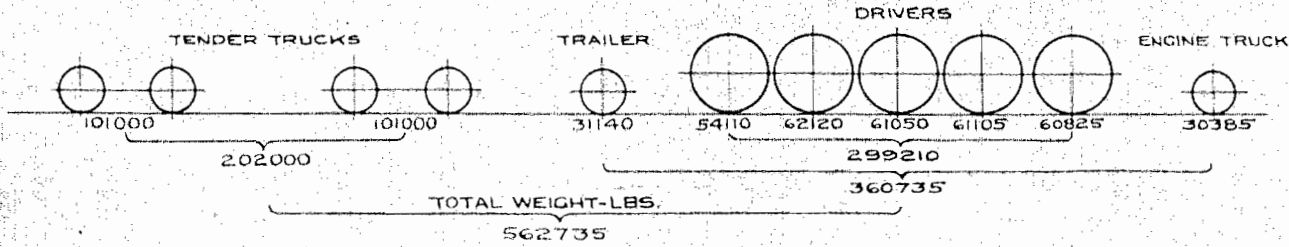
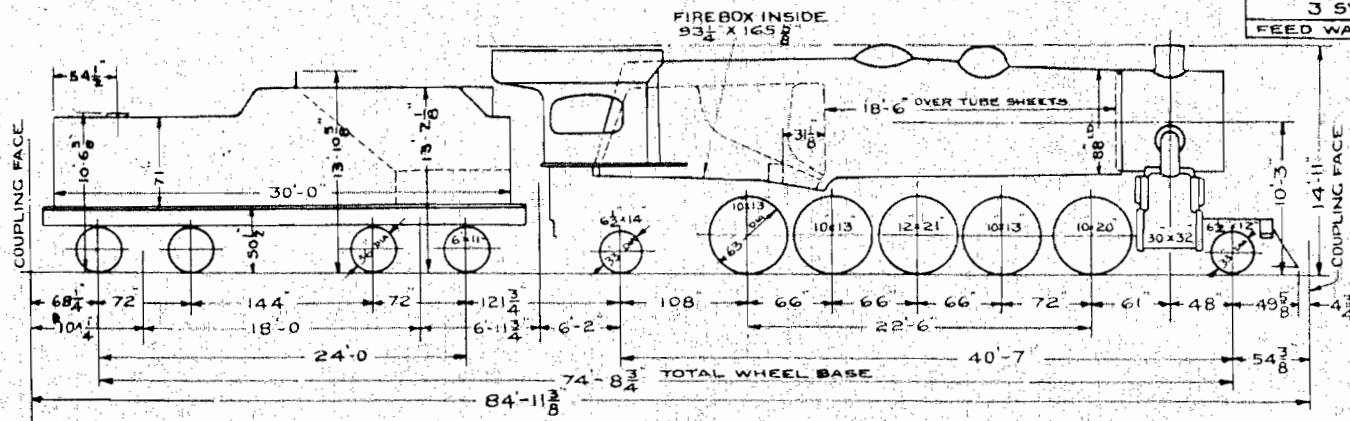


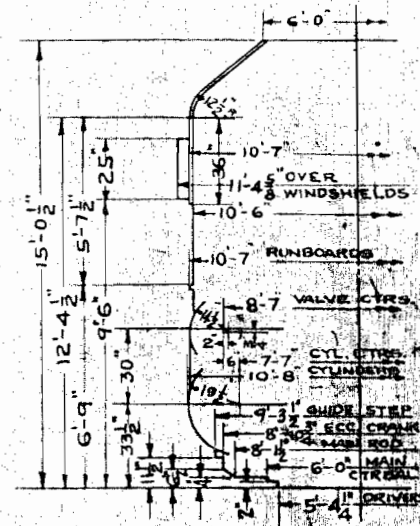
JUNE 5, 1931.

N.Y.N.H. & H.R.R. CO. OFFICE OF MECH. ENGR.

W-11-A TENDER ENGS. 3200-3249 CLAY -1-A LOCOS.  
 TYPE A SUPERHEATER  
 3 SYPHONS  
 FEED WATER HEATER  
 DIAGRAM  
 SK. NO. 8088



ALL WEIGHTS FOR ENGINE AND TENDER IN WORKING ORDER



CORRECT

APPROVED

*B.R. Jones*  
C.D.

*Sam Hartnett*  
A.M.E.

ITEM	BOILER	HEATING SURFACE	LENGTH	DIA.	GAUGE OR THICK.	DESIGN DATA	GENERAL DATA
1	BOILER TUBES — 244 SPACING 1/4	2645	18'-6	2 1/2	#12 MIN.	CALCULATED EVAPORATION LBS. / HR.	BOILER PRESSURE 200 LBS.
2	BOILER FLUES — 52 SPACING 1/4	1378	18'-6	5 1/2	#10 MIN.	TUBES @ 9.29 LBS.	TRACTIVE EFFORT 77800 LBS.
3	TOTAL TUBES & FLUES	4023				FLUES @ 10.44 LBS.	FACTOR OF ADHESION 3.85
4	FIRE BOX PROPER	266				SYPHONS @ 55 LBS.	MAX. CURVATURE 16 1/2
5	SYPHONS - 3	154				FIRE BOX @ 55 LBS.	ENGINE TRUCK SWING 6
6	TOTAL FIRE BOX	420				TOTAL EVAPORATION	TRAILING TRUCK SWING 4 1/2
7	TOTAL EVAPORATING HEATING SURFACE	4443				ST. CONSUMPTION (3244x20.8)	COAL CAPACITY 16 TONS
8	TOTAL SUPERHEATING HEATING SURFACE	1115				BOILER FACTOR	WATER CAPACITY 11000 GALS.
9	TUBE SHEETS FT. 5/8 BK. 1/2					FIRE BOX H.S. TO GRATE AREA	VALVE GEAR BAKER
10	GRATE AREA 82 SQ. FT.					TOTAL H.S. TO FIRE BOX H.S.	STOKER 'LT-1' CONVERSION
11	WEIGHT WATER 2 1/2 GAUGES					TOTAL H.S. TO SUPERHEATER H.S.	MAX. CUT OFF 89.6%
12						FRAME CTRS. 41' FRAME WIDTH 6'	THROTTLE - CHAMBERS DOME TYPE - OUT. CONN.
13							FT. LATERAL DRIV. BOX 'I' PLAY
14							FIRE BOX ARCH GAINES
15							

SK. NO. 8088