

CLASSIFICATION: K-1-B

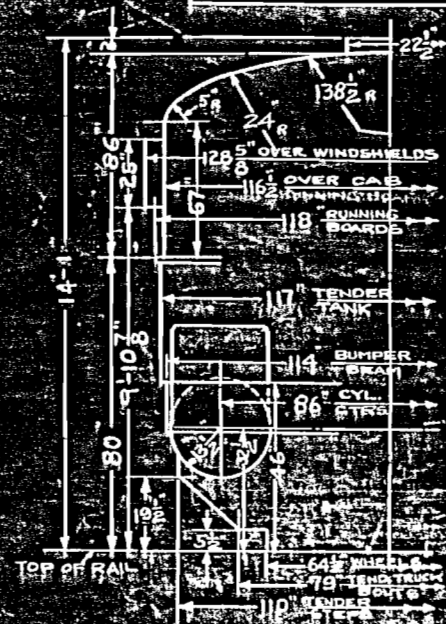
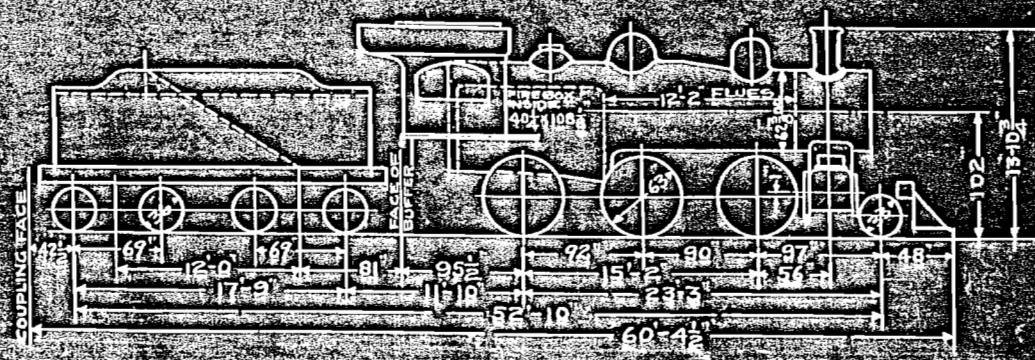
DIAGRAM

SK. 8046

DEC 19 1929

AMERICAN RAILROAD MACHINERY OFFICE

ALL DIMENSIONS ARE GIVEN FOR ENGINE AND TENDER IN WORKING ORDER AND WITH NEW WHEELS AND TIRES.



CORRECT

B. Jones
S.R.

APPROVED

James H. ...
S.R.

THIS SK. SUPERSEDES SKS. 5477 & 5210

BOILER DATA				TENDER DATA				WEIGHT DATA			GENERAL DATA			
ITEM	B.W.G.	DIAM.	HEATING SURFACE		TENDER DIAGRAM	LOADED WT. LBS.	CAPACITY WATER	TENDER COAL	TENDER CLASS	WEIGHTS TOT. ENG.	DRIVERS	ENGINE SERIES	BOILER PRESSURE	
			298 FLUES	308 FLUES?									200 LBS.	30223 LBS.
BOILER FLUES	12 MIN.	2 1/2	1883	1947	8009	133300	7000	12	W-6-A	153000	131600	260-219 INCL.	FACTOR OF ADHESION APPROX. 4.35	
FIREBOX PROPER	12 MIN.	2 1/2	164	164	8008	133300	7000	12	W-6-B	153000	131600	326-350 INCL.	MAX. CURVATURE 1:209	
ARCH TUBES (2)	8 MIN.	3	15	15	8018	133300	7000	12	W-6-C	151000	130000	351-419 INCL.	VALVE GEAR STEPHENSON	
TOTAL FIRE BOX			179	179	8010	116000	6000	10	W-5-B	153000	131600	420-479 INCL.	CYLINDER 20" X 28"	
TOTAL HTG. SURFACE			2062	2126									VALVE D TYPE	
GRATE AREA			30.2	30.2										

OR TO ...