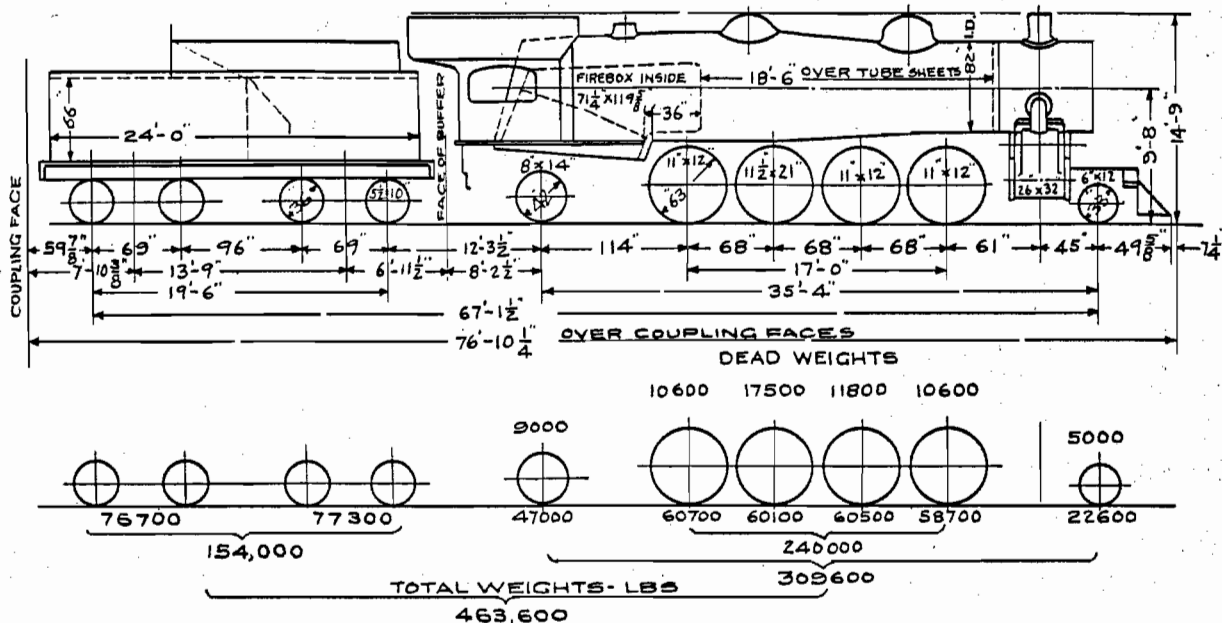


11-20-29

N.Y. N.H. & H.R.R. CO. OFFICE OF MECH. ENGR.



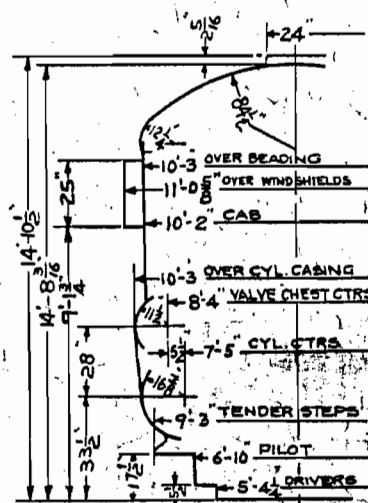
ALL WEIGHTS FOR ENGINE AND TENDER IN WORKING ORDER

CORRECT

APPROVED

BR Jones
CD

Kennerly
A.M.E.



ITEM	BOILER	HEATING SURFACE	LENGTH	DIA.	GAUGE OR THICKNS.	DESIGN DATA	GENERAL DATA
1	SMALL FLUES - 229- SPACING 3/8"	2483	18'-6"	2 1/2"	#12 MIN.	CALCULATED EVAPORATION LBS/HR.	BOILER PRESSURE 200 LBS.
2	LARGE FLUES - 40- SPACING 1 1/2"	1060	18'-6"	5 1/2"	#10 MIN.	2 1/2 FLUES @ 9.29 LBS.	TRACTIVE EFFORT 58372 LBS.
3	TOTAL FLUES	3543				5 1/2 FLUES @ 10.39 LBS.	FACTOR OF ADHESION 4.13
4	FIREBOX PROPER	222				FIREBOX @ 55 LBS.	MAX. CURVATURE 19°
5	COMBUSTION CHAMBER 36"	71				COMB. CHAMBER @ 55 LBS.	ENGINE TRUCK SWING 4"
6	ARCH TUBES - 4	28	10'-5"	3"	#8 MIN.	ARCH TUBES @ 55 LBS.	TRAILING TRUCK SWING 4 1/2"
7	TOTAL FIREBOX	321				TOTAL EVAPORATION	COAL CAPACITY 12 TONS
8	TOTAL EVAP. HEATING SURFACE	3864				ST. CONSUMPTION (2434 x 20.8)	WATER CAPACITY 7500 GALS.
9	TOTAL SUPHTG HEATING SURFACE	870				BOILER FACTOR 102.3 %	VALVE GEAR BAKER
10	FLUE SHEETS FT. 5/8" BK. 1/2"					FIREBOX H.S. TO GRATE AREA 5.42	MAX. CUTOFF 89.6%
11	GRATE AREA 59.2 SQ. FT.					TOTAL EVAP. H.S. TO FIREBOX H.S. 12.04	SUPERHEATER TYPE 'A'
12	WEIGHT WATER 2 1/2" GAUGES					TOTAL EVAP. H.S. TO SUPHTG. H.S. 4.44	COAL PUSHER 1 HORIZONTAL
13						ASH PAN AIR OPENING	
14						CAS AREA THROUGH FLUES 121 %	
15						FRAME CTRS. 42" FRAME WIDTH 6"	