

TENDER W-12-C

ENG. NOS. 1387, 1387, 1387

CLASS I-4-F

TYPE E SUPER.

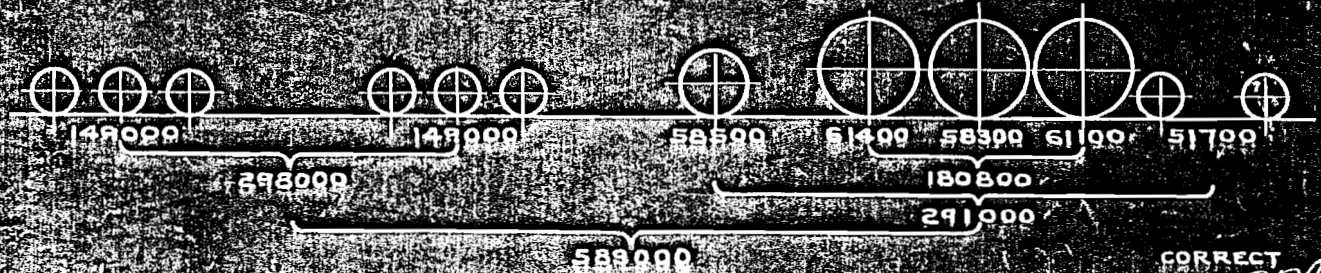
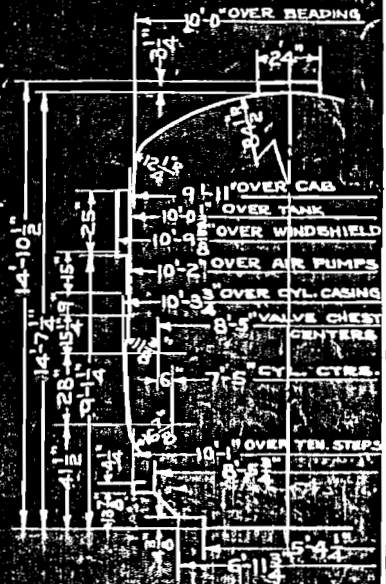
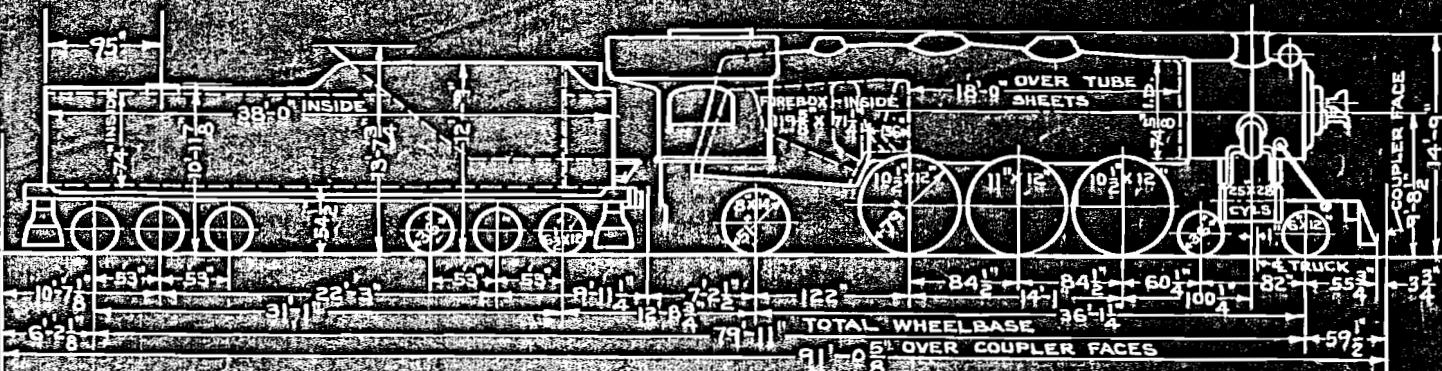
DIAGRAM

STOKER

SK. NO. 8381

AUG-2-1940

NEW YORK OFFICE OF MICHAEL



589000
ALL WEIGHTS FOR ENGINE AND TENDER IN WORKING ORDER

CORRECT

APPROVED

B. Jones

K. [Signature]

ASST. M.E.

M.E.

ITEM NO.	BOILER	HEATING SURFACE	LENGTH OVER TUBE SHEETS	GAUGE FOR THICK.
1	BOILER TUBES-54 SPACING 1/16"	570	18'-0"	2 1/2" 12 MIN
2	BOILER FLUES-160 SPACING 1/16"	2640	18'-0"	3 1/2" 11 MIN
3	TOTAL TUBES AND FLUES	3210		
4	FIREBOX PROPER	210		
5	COMBUSTION CHAMBER	765		
6	SYPHONS-2 FIREBOX-1 COMB. CHAMBER	91		
7	TOTAL FIREBOX	366		
8	TOTAL EVAPORATING HEATING SURFACE	3576		
9	TOTAL SUPERHEATING HEATING SURFACE	1425		
10	TUBE SHEET-FT. 3/4" BK. 1/2"			
11	GRATE AREA		59.2 SQ. FT.	

DESIGN DATA	
CALCULATED EVAPORATION-LBS./HR.	
TUBES @ 9.27 LBS.	5285 LBS.
FLUES @ 9.76 LBS.	25765 LBS.
FIREBOX @ 55 LBS.	11550 LBS.
COMB. CHAMBER @ 55 LBS.	3580 LBS.
3 SYPHONS @ 35 LBS.	5000 LBS.
TOTAL EVAPORATION	51180 LBS.
ST. CONSUMPTION (2252 X 20.8)	46840 LBS.
BOILER FACTOR	109.2 %
FIREBOX H.S. TO GRATE AREA	6.2
TOTAL EVAP. H.S. TO SUPHTQ. H.S.	9.8
TOTAL EVAP. H.S. TO SUPHTQ. H.S.	2.5
ASH PAN AIR OPENING	13.4 %
FRAME CENTERS-42" FRAME WIDTH 5 1/2"	

GENERAL DATA	
BOILER PRESSURE	200 LBS.
TRACTIVE EFFORT	37650 LBS.
FACTOR OF ADHESION	4.8
MAX. CURVATURE	16'
ENGINE TRUCK SWING	3 1/2"
TRAILING TRUCK SWING	4 1/2"
COAL CAPACITY	16 TONS
WATER CAPACITY	16000 GALS.
VALVE GEAR	BAKER-ROLLER BEARING
STOKER	HT-1
STOKER-ENG. NOS. 1387, 1387	BELKLEY
FEED WATER HEATER	ELESCO
THROTTLE-CHAMBERS, SIDE CONN.	DOMESTIC
MAX. CUT OFF	87.7%

TRUCK IN.