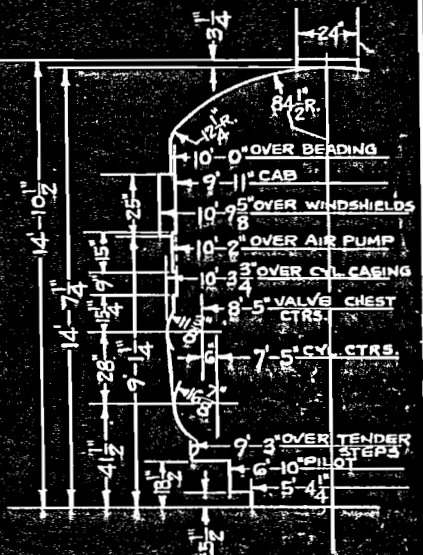
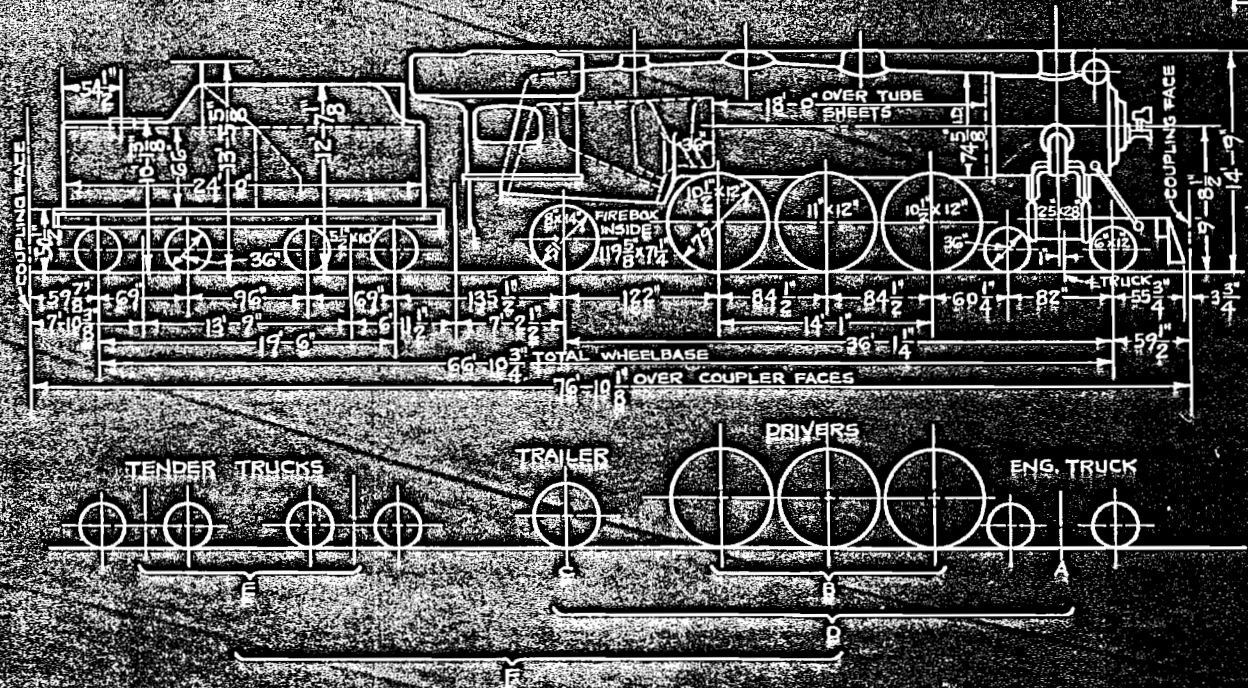


SEPT 23 1942

N.Y. N.H. & H.R.R. - OFFICE OF MECH. ENGR.



ALL WEIGHTS FOR ENGINE AND TENDER IN WORKING ORDER.

LOCATION	I-4-E	I-4-F
A ENG. TRUCK	51,100	51,700
B DRIVERS	178,600	180,800
C TRAILER	57,800	58,500
D TOTAL ENG.	287,500	291,000
E TENDER	154,000	154,000
F ENG. & TEN.	441,500	445,000
ENGINE NO'S	1374, 1377, 1378, 1389, 1383	1373, 1375, 1376, 1384, 1382, 1388

GENERAL DATA
 WATER CAPACITY ----- 7500 GALS.
 COAL CAPACITY ----- 12 TONS
 STOKER ----- HT-1
~~STOKER DESIGN ----- ENG. 1374 ONLY~~
~~ENG. CLASS I-4-E WITH TYPE "A" SUPERHEATER~~
 ENG. CLASS I-4-F ----- WITH TYPE "E" SUPERHEATER

FOR LOCOMOTIVE DATA SEE SK. NO. 8372 TYPE "A" SUPERHEATER
 FOR LOCOMOTIVE DATA SEE SK. NO. 8381 TYPE "E" SUPERHEATER

CORRECT
S. L. ...
 ASST. M.E.

APPROVED
[Signature]
 M.E.