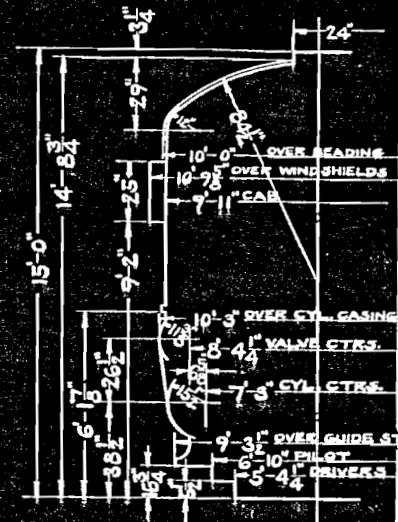
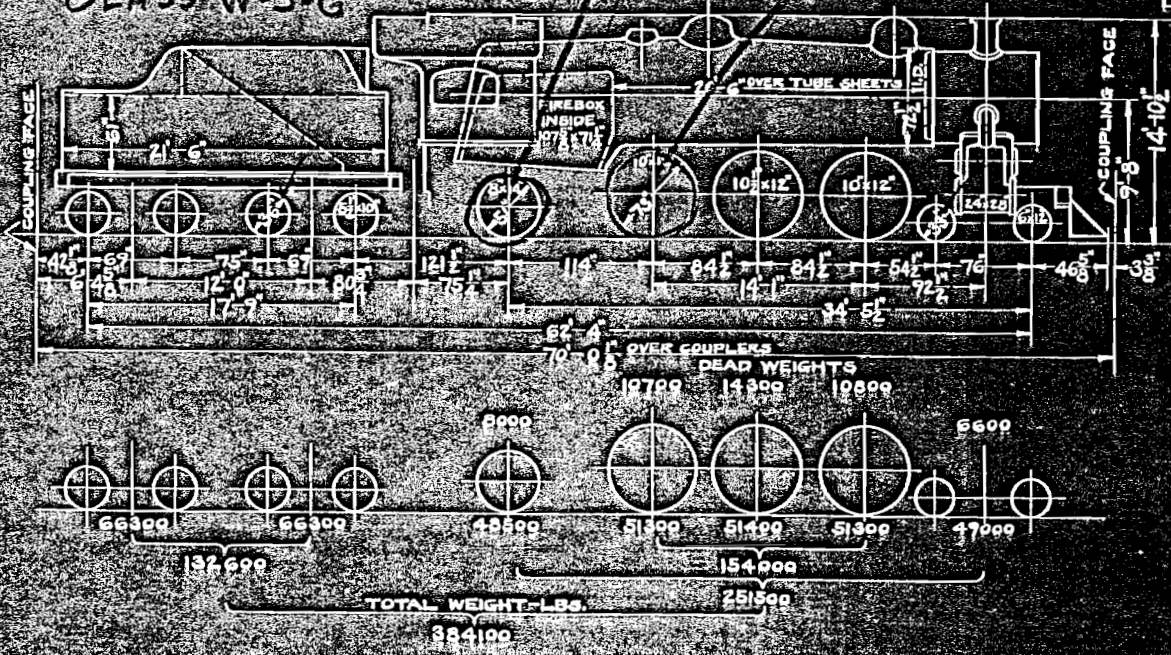


CLASS W-5-G



ALL WEIGHTS FOR ENGINE AND TENDER IN WORKING ORDER

CORRECT

APPROVED

B.R. Jones
 ASST. M.E.

[Signature]
 M.E.

ITEM	BOILER	HEATING SURFACE	LENGTH OVER TUBE SHEETS	DIA.	GAUGE OR THICK	DESIGN DATA		GENERAL DATA	
						DESIGN DATA	GENERAL DATA		
1	BOILER TUBES=177=SPACING 3/4"	2128	20'-6"	2 1/2"	#12 MIN.	CALCULATED EVAPORATION LBS. PER HOUR	BOILER PRESSURE	200 LBS.	
2	BOILER FLUES=32=SPACING 3/4"	740	20'-6"	5 1/2"	#10 MIN.	TUBES @ 8.69 LBS.	TRACTIVE EFFORT	37558 LBS.	
3	TOTAL TUBES & FLUES	3068				FLUES @ 7.86 LBS.	FACTOR OF ADHESION	4.1	
4	FIREBOX PROPER	189				FIREBOX @ 56 LBS.	MAX. CURVATURE	17°	
5	COMBUSTION CHAMBER					COMBUSTION CHAMBER	ENGINE TRUCK SWING	3 1/2"	
6	ARCH TUBES=4	29	9'-6 1/8"	3"	#8 MIN.	ARCH TUBES @ 55 LBS.	TRAILING TRUCK SWING	4 1/2"	
7	TOTAL FIREBOX	218				TOTAL EVAPORATION	COAL CAPACITY	13 TONS	
8	TOTAL EVAPORATING HEATING SURFACE	3286				ST. CONSUMPTION (2076x20.8)	WATER CAPACITY	6000 GALS.	
9	TOTAL SUPERHEATING HEATING SURFACE	780				BOILER FACTOR	VALVE GEAR	WALSCHAERT	
10	TUBE SHEETS-FRONT 5/8"=BACK 1/2"					FIREBOX H.S. TO GRATE AREA	STOKER		
11	GRATE AREA			53.2 SQ. FT.		TOTAL EVAPOR. H.S. TO FIREBOX H.S.	FEED WATER HEATER		
12	WEIGHT WATER 2 1/2" GAUGES					TOTAL EVAPOR. H.S. TO SUPHTG. H.S.	THROTTLE-CHAMBERS DOME TYPE IN. CONN.		
13						ASH PAN AIR OPENING	MAX. CUT OFF	86%	
14						GAS AREA THRU TUBES & FLUES			
15						FRAME CTRS. 4-3" FRAME WIDTH 5"			

REVISED 2-1-34 TO SHOW 377 TUBES

APR. 7, 1925
 W. A. R. CO. OFFICE OF MECH. ENGRS.