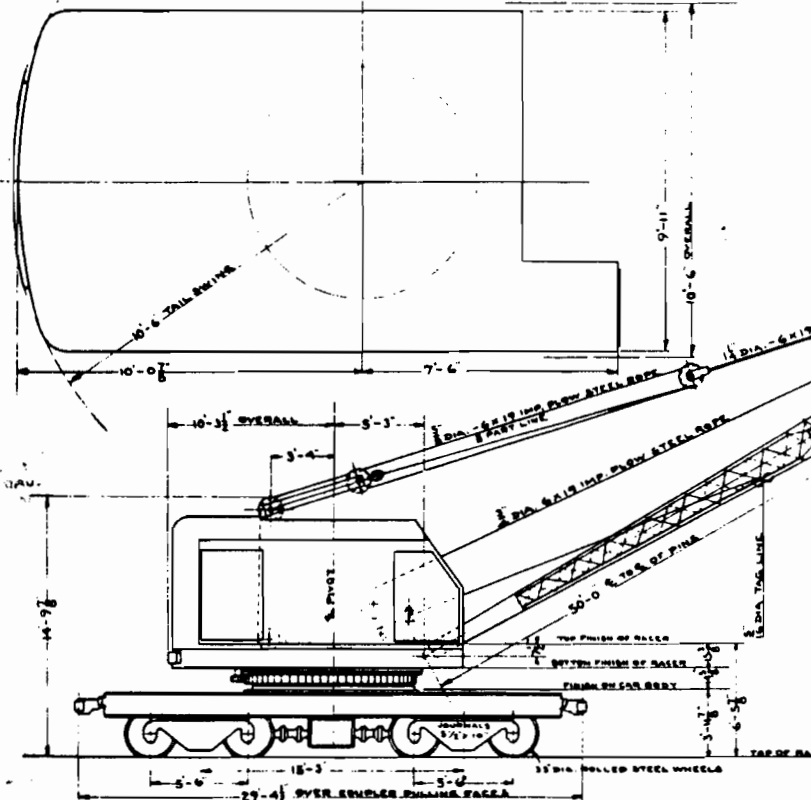


UNLESS INDICATED
LOAD CRANE
H-47

GENERAL DATA

BUILDER - AMERICAN HOIST AND DERRICK CO - 1940
 25 TON CAPACITY - MODEL 825G
 WORTHINGTON AIR COMPRESSOR 4 1/2" X 4" -TYPE V.S
 ELEC. CONTROLLER - CUTLER HAMMER -CAT. 549-H22
 MAGNET GENERATOR -GE-CD 75, 10 KW -1150 RPM -250 V.-D.C
 LIGHTING GENERATOR - KOHLER MODEL "1" 1 KW -115 V.
 13 AMPS -1000 RPM - SERIAL #11962
 TRUCKS EQUIPPED WITH SELF PROPELLING DRIVE



GASOLINE ENGINE
 WAUKESHA MODEL 6WALU.
 HP 140 AT 1100 RPM
 6 CYL. 5 1/2" X 6 1/2"
 SERIAL NO. 472429
 FUEL TANK CAPACITY - 75 GAL.

LIFTING CAPACITIES

RADIUS	WITH	
	OUTRIGGER	WITHOUT
12 FT	5000*	5000*
15 "	4450*	3800*
20 "	3120*	2650*
30 "	1850*	1580*
40 "	1290*	1100*
50 "	960*	820*

TOTAL WORKING WEIGHT APPROX 152600*

A. A. R. TYPE 'E' COUPLERS - 6x4 SHANK
 FRICTION DRAFT GEAR - EACH END

N. Y. N. H. & H. R. R.
 NEW HAVEN FEB. 10, 1941

DIAGRAM
 25 TON GAS LOCO CRANE

CORRECT

X	TO ADD GENERAL DATA	4-B-46	A
---	---------------------	--------	---

IN. OIL BY WHY REQUESTED DATE LETTER

ASST. M. E. 24643

BY TR CA IN
 15 RD G