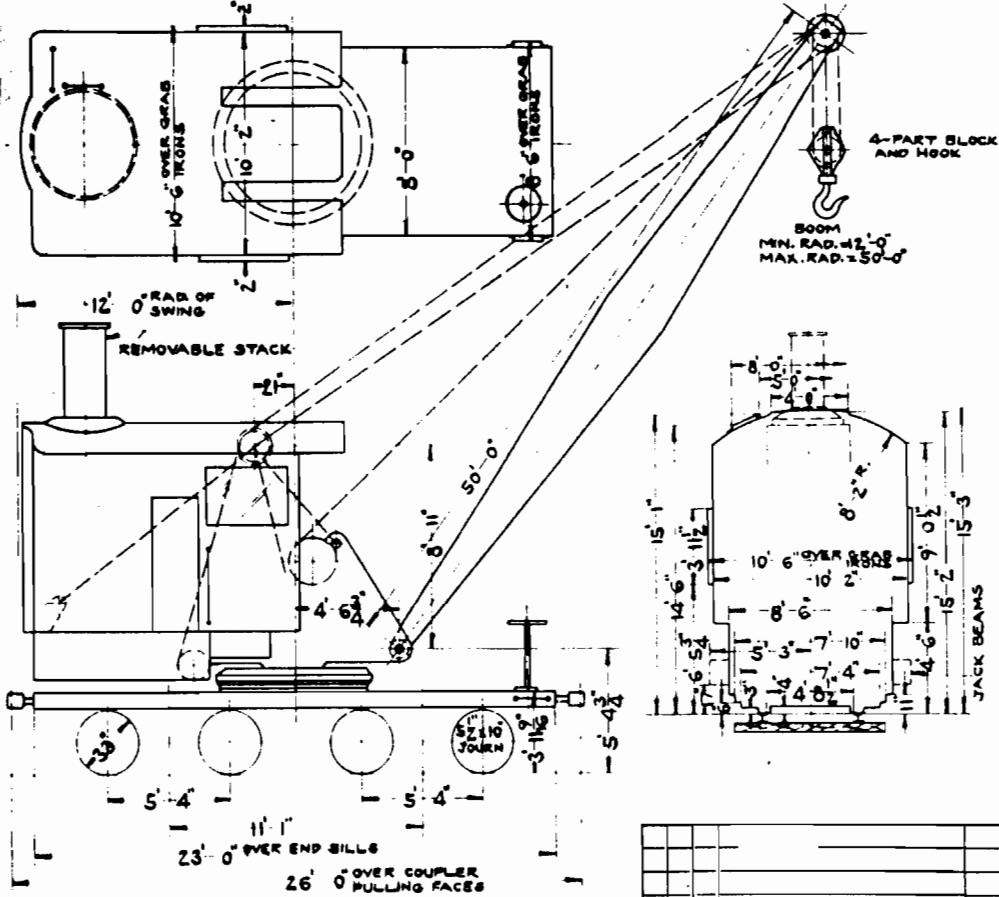


BUILDERS NO.	LOCC. CRANE REV. NO.	WHERE USED
4933	H-3	
4934	H-4	



GENERAL DATA
 BUILT BY INDUSTRIAL BROWN HOIST CORP., 1927.
 STEAM ENGINE-2-DOUBLE CYLINDERS-8"x10"
 RATED HORSEPOWER OF ENGINE. 130 H.P.
 BOILER PRESSURE-WHEN NEW. 160 LBS.
 VERTICAL TUBULAR BOILER.
 CAPACITY OF WATER TANK. 500 GALS.
 SHIPPING WEIGHT-WITHOUT WATER, COAL OR BALLAST. 96440 LBS.
 SCRAP BALLAST IN BOILER EXT. 11750 LBS.
 SCRAP BALLAST IN CAB BODY. 22760 LBS.
 COAL & WATER. 9300 LBS.
 WEIGHT-FULL WORKING ORDER. 142240 LBS.
 COUPLERS-CLASS D-A.A.R. STD. 8'x8'
 TRUCKS-CAST STEEL SIDE FRAMES INTEGRAL BOX TYPE 5 1/2'x10'
 TRAVEL SPEED. 2 TO 7 M.P.H.
 TRAVEL CONTROL-FRISBIE TYPE FRICTION CLUTCH
 DRAW BAR FULL-STRAIGHT LEVEL TRACK STARTING. 9700 LBS.
 DRAW BAR FULL-2-M.P.H. 7000 LBS.
 MINIMUM RADIUS CURVE RECOMMENDED-60'-0"

LIFTING CAPACITIES-50'-0" BOOM

RADIUS	WITHOUT OUTRIGGERS	WITH CENTER OUTRIGGERS
12'-0"	30000 LBS.	50000 LBS.
15'-0"	38000 LBS.	44000 LBS.
20'-0"	26000 LBS.	33000 LBS.
25'-0"	19700 LBS.	25000 LBS.
30'-0"	15500 LBS.	20000 LBS.
35'-0"	12500 LBS.	16000 LBS.
40'-0"	11000 LBS.	13000 LBS.
45'-0"	9500 LBS.	11000 LBS.
50'-0"	8200 LBS.	10000 LBS.

N. Y., N. H. & H. R. R.
 NEW HAVEN AUG. 27, 1942

DIAGRAM
25 TON STEAM LOCC. CRANE

CORRECT APPROVED

ASST. M. E. 24817

IN	CK	BY	WHY REISSUED	DATE	LETTER

DR TR CK IN
 RS RS 2/2