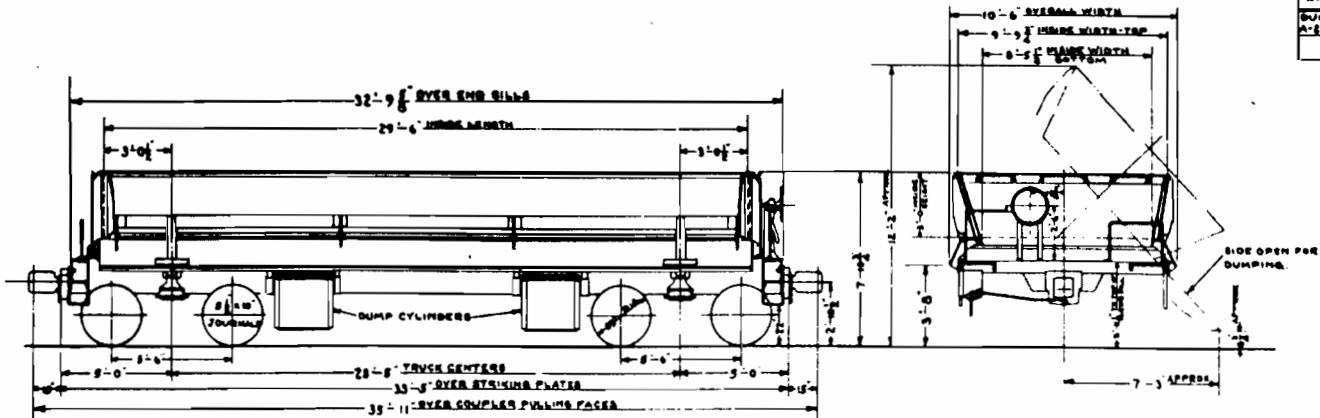


WHERE USED
DUMP CARS
A-199 TO A-113



DESCRIPTIVE DATA

AIR OPERATED SIDE DUMP CAR - SELF CLEARING
 BUILT BY MAGOR CAR CORPORATION 1947 (BUILT AT RALSTON PLANT)
 LIGHT WEIGHT - 59600 LBS APPROX.
 CAPACITY - 30 CUBIC YARDS, LOAD CAPACITY - 100000 LBS
 AIR BRAKE - W.A.B. CO'S TYPE AB BRAKE WITH 10 X 12 BRAKE CYLINDER
 HAND BRAKE - MINER POWER HAND BRAKE - VERTICAL WHEEL TYPE.
 TRUCKS - A.A.R. 5 1/2 X 10 JOURNALS - 33 C.I. WHEELS - CAST STEEL DOUBLE
 TRUSS SIDE FRAMES - SPRING PLANK-LESS TYPE, A.A.R. NO. 3 BRAKE BEAMS.
 COUPLERS - A.A.R. TYPE E' 6 1/2 X 8 SHANK - SWIVEL BUTT BOTTOM
 OPERATED WITH CAST STEEL YOKE.
 DRAFT GEAR - FRICTION TYPE - MINER A-22-XB
 UNDERFRAME - ALL STEEL - BUILT UP TYPE - RIVETED.
 4-28" DIA. TELESCOPING TYPE CYLINDERS (2-ON EACH SIDE OF CAR) VERTICAL OPERATING
 AIR DUMP EQUIPMENT FURNISHED BY CAR BUILDER.

NOTE -
CARS MAY BE DUMPED
SINGLY OR IN MULTIPLES

N. Y., N. H. & H. R. R.
NEW HAVEN DEC. 6, 1947

DIAGRAM
AIR OPERATED DUMP CARS

CORRECT *[Signature]* APPROVED *[Signature]*
 ASST. M. E. 25405
 C. N. E.

| | | | | | |
|----|----|----|--------------|------|--------|
| | | | | | |
| | | | | | |
| | | | | | |
| | | | | | |
| | | | | | |
| IN | CK | BY | WHY REISSUED | DATE | LETTER |

11 TR. CK. 111
11 W. 111