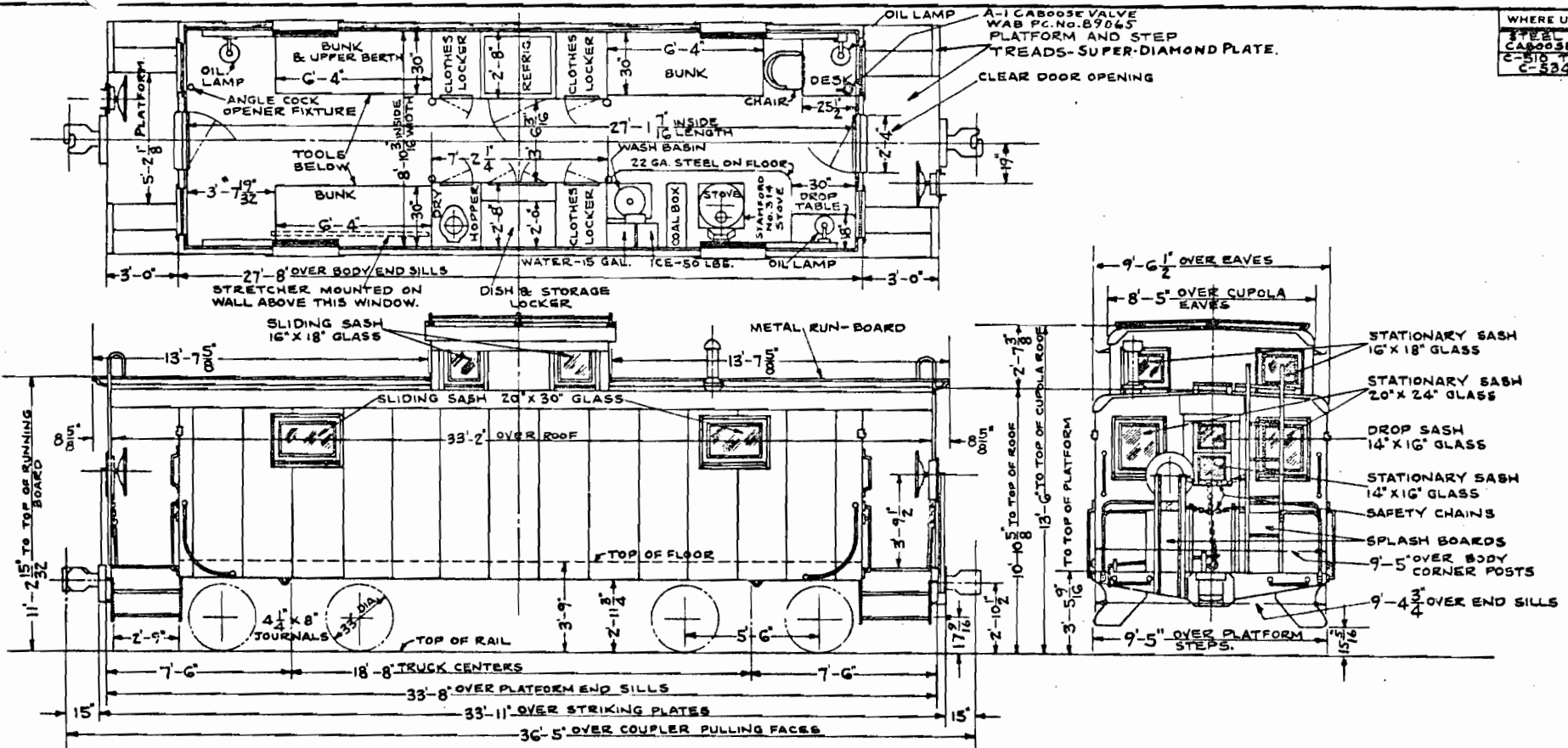


WHERE USED  
STEEL  
CABOOSE  
C-510 TO  
C-534



**DESCRIPTIVE DATA**

ALL WELDED STEEL CAR INSULATED THRU-OUT AND WOOD LINED, BUILT BY FULL-STD CAR MFG. CO. WORCESTER-1940.  
 LIGHT WEIGHT OF CAR:-43500 LBS. AVERAGE.  
 AIR BRAKE:-W.A.B. CO.'S 'AB' BRAKE WITH 10"X12" CYL & "WINE" BRAKE BALANCER.  
 DRAFT GEAR:-MINER A-4-XB PASSENGER TYPE FRICTION GEAR. (CARS C-518 & C-525 ARE EQUIPPED WITH WAUGHMAT GEARS.)  
 COUPLER:-A.A.R TYPE "E" 6 1/4 X 8" SHANK, TOP OPERATED RIGID KEY TYPE COUPLER WITH CAST STEELYOKE.  
 TRUCKS:-4 1/2 X 8" SWING MOTION TYPE FURNISHED BY BETTENDORF CORP. AND EQUIPPED WITH ELLIPTIC SPRINGS,  
 ROLLER SIDE BEARINGS AND SINGLE SHOE BRAKES.  
 LIGHTING:-WICK BURNER OIL LAMPS FURNISHED BY DAYTON MFG. CO.  
 HAND BRAKE:-AJAX GEARED TYPE.  
 ALL WINDOWS AND DOORS EQUIPPED WITH METAL PROTECTION SCREENS.

IN.	CK.	BY	WHY REISSUED	DATE	LETTER
			STAMFORD STOVE REPLACES BARCO STOVE	8-30-46	E
			PLATFORM STEPS AND COUPLER CHANGED. A-1 CABOOSE VALVE ADDED.	1-4-45	D
			TO SHOW CARS C-518 & C-525 EQUIPPED WITH WAUGHMAT DRAFT GEARS	6-3-44	C
			DIM. AT # WAS 3'-7 1/2	6-25-42	B
			WINDOW GUARDS REMOVED	7-13-40	A

**N. Y., N. H. & H. R. R.**  
 NEW HAVEN APRIL 19, 1940.  
**DIAGRAM**  
**STEEL CABOOSE**  
**C-510 TO C-534**

CORRECT

APPROVED

*B. Jones*  
 ASST. M. E.

24546

*[Signature]*  
 M. E.

DR	TR	CK	IN
B.	ESS	G.	