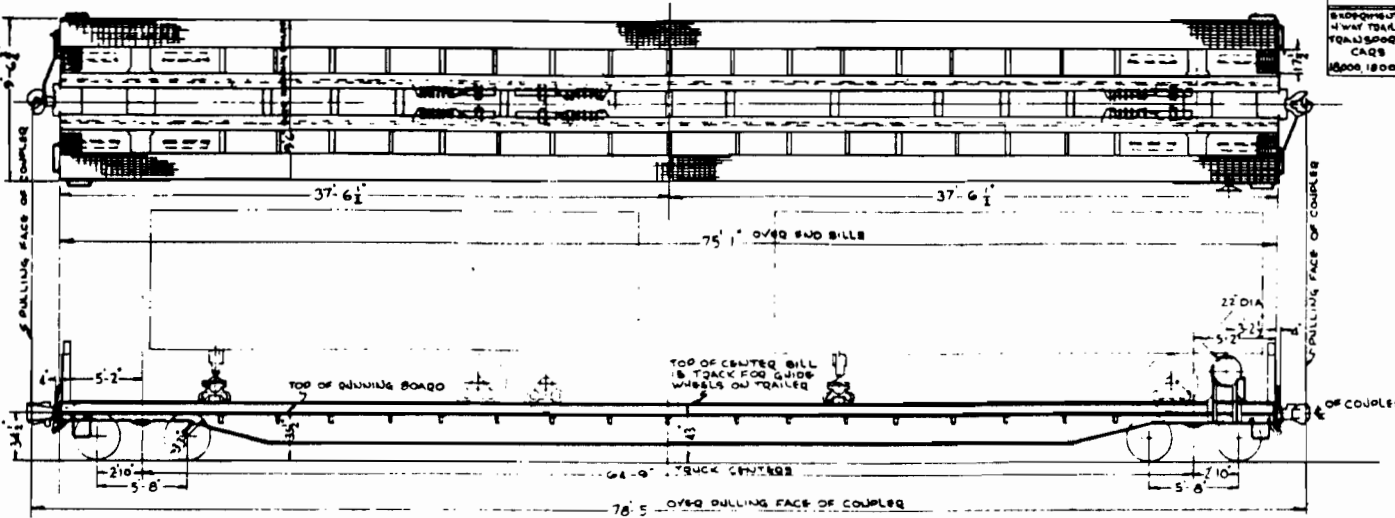
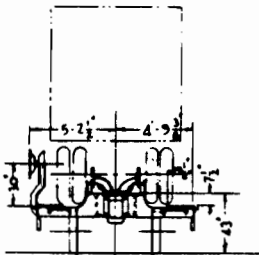


WHEELS 1500
 8 HORIZONTAL
 4 HWY TRAILED
 TRAILER
 TRANSPORT
 CARS
 15000 12001



DESCRIPTIVE DATA

ALL STEEL FLAT CAR EQUIPPED W/ SHOCK CONTROLLED HOLDING DEVICES FOR SECURING HIGHWAY SEMI-TRAILED BODIES ON CAR. (PIGGY BACKING DESIGN) BUILT AT READVILLE MASS 1955
 LIGHT WEIGHT OF CAR = 54400 LBS. W/ OF EACH TRUCK = 8430 LBS
 UNDERFRAME:- CONSISTS OF TWO (2) 30" W 132 LB, WIDE FLANGE SHAPES WITH PROJECTING SUPPORTS FOR A&R TQ-LOCK DESIGN RUNNING BOARDS AT EACH SIDE OF CAR.
 AIR BRAKES:- W&B COS 10" A-B FREIGHT CAR BRAKE EQUIPMENT WITH ONE (1) 10" x 12" BRAKE CYLINDER
 HAND BRAKE:- EQUIPCO VERTICAL WHEEL TYPE- SIDE MOUNTED.
 COUPLERS - A.A.R. TYPE 'E' SWIVEL BUTT ROTARY BOTTOM OPERATED.
 DRAFT BRAG-WAUGH-WM-A&G TWIN CUSHION
 TRUCKS:- A-3 QID CONTROL, 6" x 1" FOUR (4) WHEEL, INTEGRAL BOX CAST STEEL SIDE FRAMES ARRANGED FOR TIMKEN HEAVY DUTY ROLLER BEARINGS, 33" M.W. WROT STEEL WHEELS, A.A.R. BRAKE BEAM SUPPORTS WITH MOBIL BRAKE HANGER SUSPENSIONS.
 EQUIPPED WITH TRACK EXTENSIONS AT ENDS, DIAGONALLY OPPOSITE, FOR TRANSFER OF TRAILERS TO ADJACENT CARS.



N. Y. N. H. & H. R. R.
 NEW HAVEN MARCH 9, 1955
DIAGRAM
EXPERIMENTAL HIGHWAY
TRAILER TRANSPORT CARS

CORRECT APPROVED
 25895 *J. L. Kachel*
 ASST. MGR. M.G.

IN	CK	BY	WHY	REISSUED	DATE

OR TRUCKING
 20