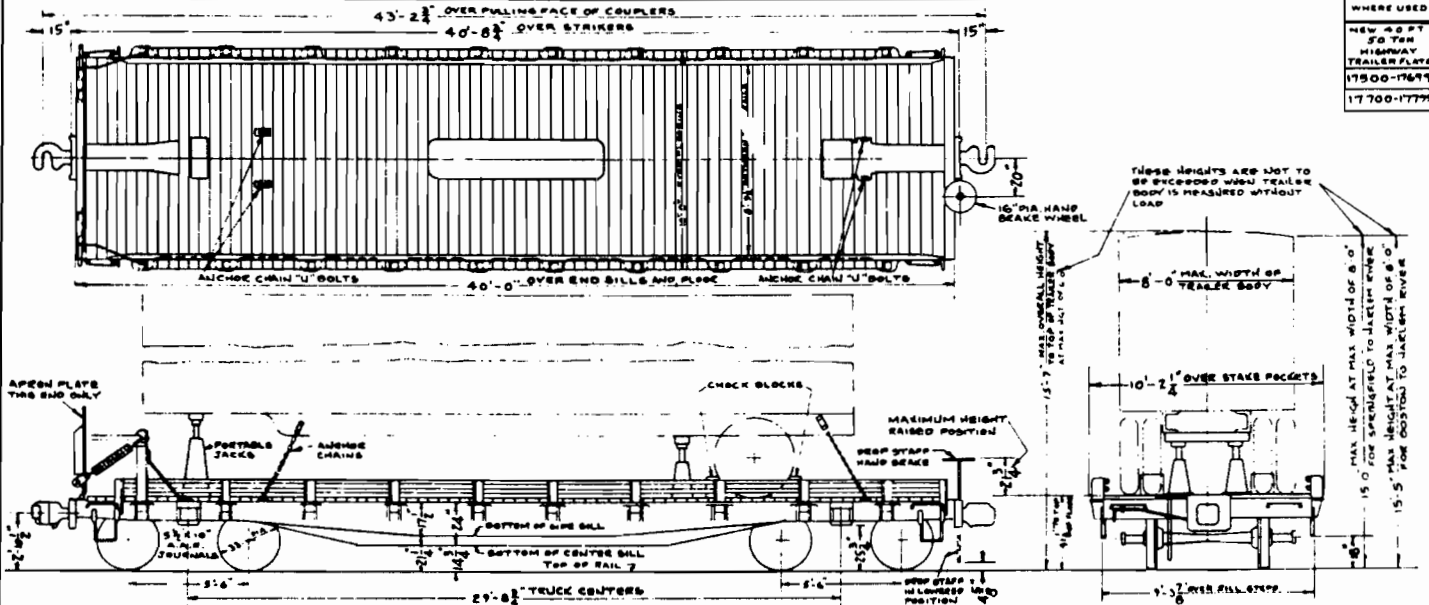


WHERE USED
 NEW 48 FT
 50 TON
 HIGHWAY
 TRAILER FLAT
 CARS 17500-17699
 17700-17799



DESCRIPTIVE DATA

ALL STEEL PLAT CAR EQUIPPED WITH DEVICES FOR LOADING AND SECURING HIGHWAY TRAILER BODIES (BUILT IN MARYBROOK, NY CARS 17600-17699 BUILT IN 1951) UNDERFRAME - CAST STEEL - ONE PIECE - FURNISHED BY GENERAL STEEL CASTINGS CORP. (BUILT IN READVILLE, MASS. CARS 17700-17799 BUILT IN 1953)
 LIGHT WEIGHT OF CAR COMPLETE - 47000 LBS. AVERAGE - CARS 17500-17699. 47900 LBS. AVERAGE - CARS 17700-17799. WEIGHT OF EACH TRUCK - 7400 LBS.
 CAPACITY - 100000 LBS. (NOMINAL).
 AIR BRAKES - W.A.S. CO. TYPE "AB" FREIGHT CAR BRAKE EQUIPMENT WITH 10" X 12" BRAKE CYLINDER. CARS 17500-17699 ARE EQUIPPED WITH UNIVERSAL RAILWAY DEVICES CO. AUTOMATIC SLACK ADJUSTER. CARS 17700-17799 ARE EQUIPPED WITH W.A.S. CO. TYPE D-111-D PNEUMATIC SLACK ADJUSTERS
 HAND BRAKE - UNIVERSAL RAILWAY DEVICES CO. MULTI-POWER DEEP STAFF TYPE.
 DRAFT GEAR - WAUGH EQUIPMENT CO. FRICTION TYPE 420 GEAR.
 COUPLERS - A.S.F. TYPE "C" CAST STEEL SWIVEL SUTT. ROTARY OPERATED WITH CAST STEEL YOKES.
 CAR IS EQUIPPED WITH COUPLER CENTERING DEVICE HAVING COUPLER HEIGHT ADJUSTMENT.
 TRUCKS - AMERICAN STEEL FOUNDRIES "A-3" SIDE CENTERING TRUCK WITH 3/8" TRAVEL SPRINGS. 5 1/2" X 10" JOURNALS AND 7 1/8" WHEEL BEAT DIA. AND 33" DIA. ONE WEAR WEST STEEL WHEELS.
 SIDE FRAMES HAVE ANTI-WASTE ROLL LOGGE JOURNAL BOXES.
 TRUCK IS EQUIPPED WITH BRAKE BEAM LEVELING LINKS.
 50 CARS IN SERIES 17700-17799 ARE EQUIPPED WITH SYMINGTON GOULD CORP. TRUCK SIDE FRAMES AND BOLSTERS USING A. S. F. RIDE CONTROL DETAILS

N. Y., N. H. & H. R. R.
 NEW HAVEN JAN. 17, 1951

DIAGRAM
HIGHWAY TRAILER FLAT CAR

CORRECT

ER	PL	LW	REMOVABLE QUARRY STAKE CHIMES	11-15-54	E
ER	PL	LW	TO SHOW MAX. HGT. OVER TRAILER BODIES	9-13-54	D
ER	PK	LW	TO ADD CARS 17700-17799	2-3-53	C
IN	LW	LW	LT. WT. WAS 45000 LBS.	3-28-51	B
ER	LW	LW	TO SHOW ADDITIONAL INFORMATION	11-17-51	A
IN	CR	BY	WHY REISSUED	DATE	LETTER

APPROVED

L. J. Sackel 25596 *James C. ...*

ABST M E