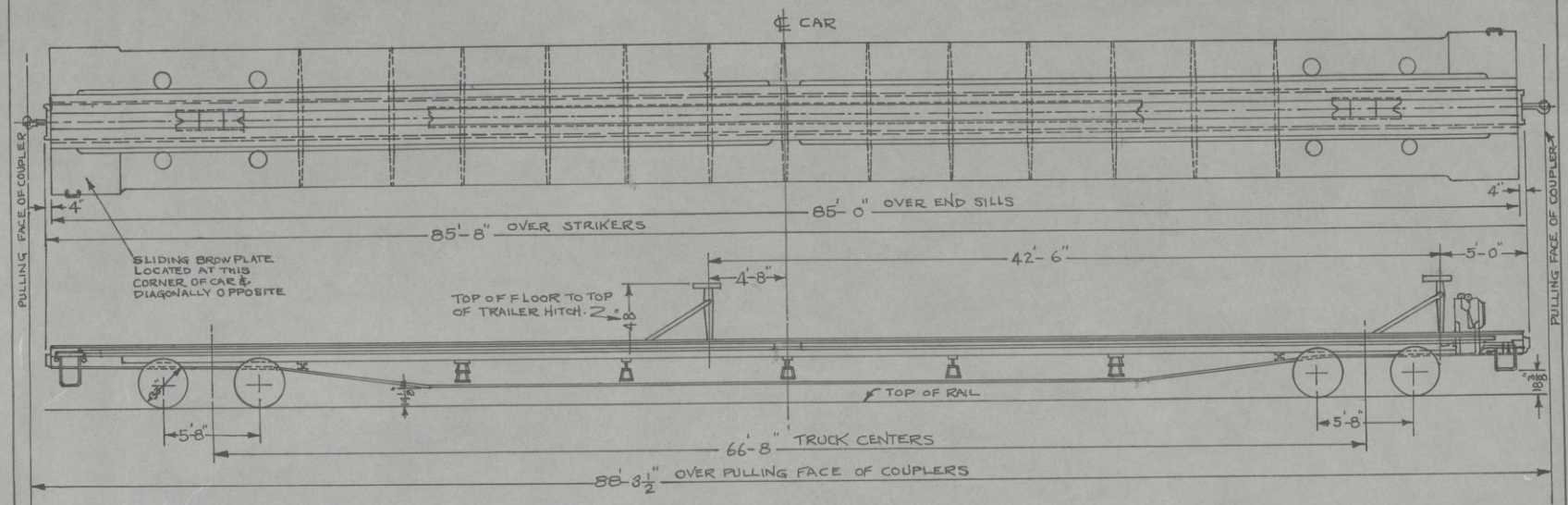
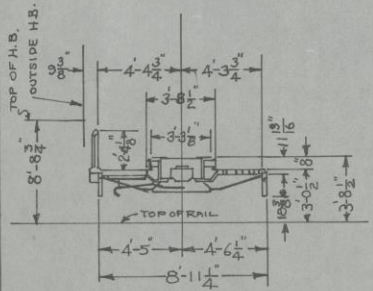


WHERE USED
G-85 TYPE
TRAILER FLAT
CARS
16000-16049



DESCRIPTIVE DATA

ALL STEEL CAR-BUILT BY GENERAL AMERICAN TRANSPORTATION CORP. 1962-1963
 LIGHT WEIGHT OF CAR = 64 000 LBS. AVERAGE
 CAPACITY = 130,000 LBS.
 AIR BRAKES: WESTINGHOUSE AIR BRAKE CO'S. 10"x12" "AB" BRAKE EQUIPMENT WITH "SLOAN VALVE CO'S "CACO" 2500-A BRAKE CYLINDER RELEASE VALVE.
 DRAFT GEAR: WAUGH EQUIPMENT CO'S. TYPE 700 FRICTION RUBBER GEAR
 COUPLER: NATIONAL CASTINGS CO'S. A.A.R. TYPE "E" SWIVEL SHANK COUPLER CATALOG NO. B-EG18-HT WITH SYMINGTON WAYNE CORPS. A.A.R. CAST STEEL YOKE, CATALOG NO. C-Y30-HT. STANDARD RAILWAY EQUIPMENT CO'S. COUPLER RELEASE RIGGING & COUPLER CENTERING DEVICE
 TRUCKS: BARBER S-2-A STABILIZED, SPRING PLANKLESS, 6" x 11" UNIT TYPE WITH TIMKEN ROLLER BEARINGS. 2 1/2" TRAVEL SPRINGS, 33" DIA. ONE WEAR WROST STEEL WHEELS.
 HAND BRAKE: EQUIPCO CO'S LEVER TYPE, POWER HANDBRAKE MODEL 3700-B
 SLACK ADJUSTER: H&L PEACOCK MODEL 1340 AUTOMATIC BRAKE REGULATOR.



N. Y., N. H. & H. R. R.
 NEW HAVEN DEC. 30, 1962
 DIAGRAM
 G-85 TRAILER FLAT CARS
 16000-16049
 CORRECT APPROVED
 E. H. Ramsey, Jr. 26078 W. J. Symons M.E.

DR TR CK IN
 RM M ER

IN	OK	BY	WHY REISSUED	DATE	LETTER
----	----	----	--------------	------	--------