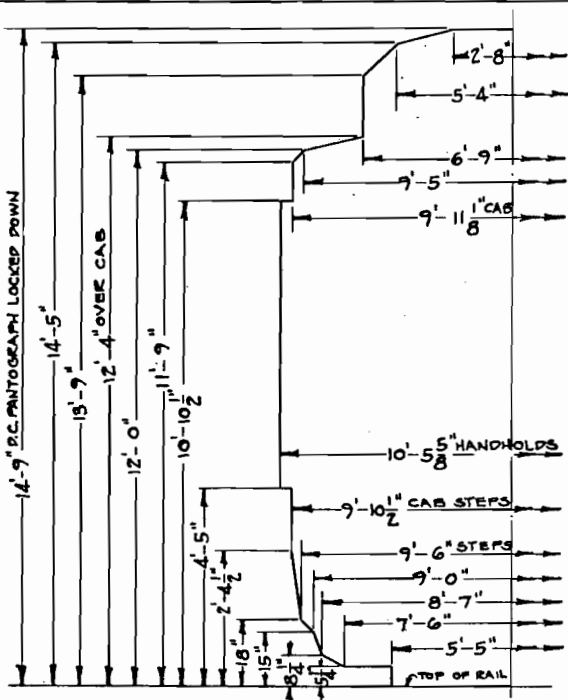


WHERE USED
ELECTRIC LOCKS
EP-5
370-379

14'-9" P.C. PANTOGRAPH LOCKED DOWN



N. Y., N. H. & H. R. R.
NEW HAVEN AUG. 1, 1955

DIAGRAM

CORRECT

APPROVED

ER	EX	LN	TRACED	8-1-55	A
IN	EX	BY	WHY REISSUED	DATE	LETTER

ASST. M.E.

56460

A. J. Sobel
M.E.