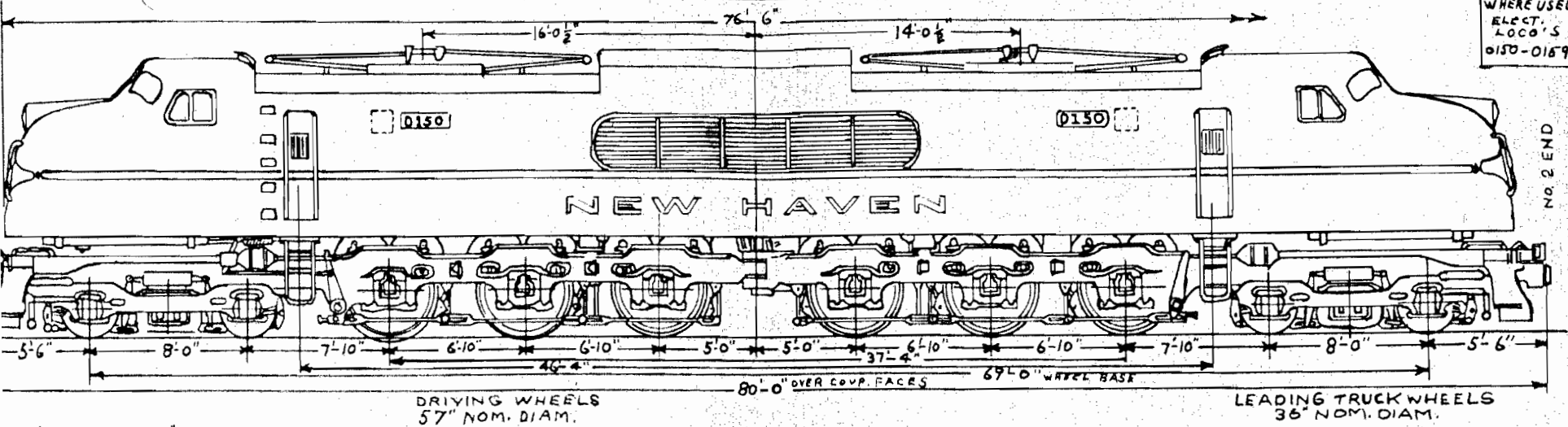


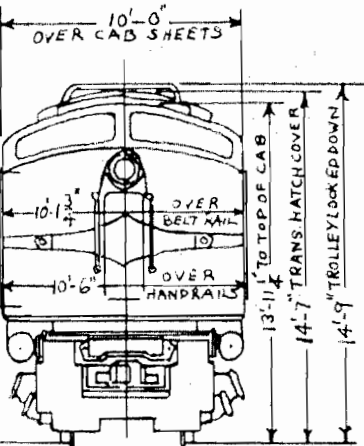
WHERE USED  
ELECT.  
LOCO'S  
0150-0159



NO. 2 END

DRIVING WHEELS  
57" NOM. DIAM.

LEADING TRUCK WHEELS  
36" NOM. DIAM.



BUILDER & DATE --- SEE TABLE  
 SERVICE --- AC FREIGHT AND PASSENGER  
 TRACTIVE EFFORT - MAX. --- 90,000\* AT 25% ADHESION TRACTIVE EFFORT - CONT. 28,000\*\* AT 65 M.P.H.  
 TRAC. MOTORS --- SEE TABLE HORSE POWER - NOM. 4800  
 CONTROL --- H.B. (DOUBLE END) CAB SIGNAL --- G.R.S. CO'S. BATTERY --- EDISON A-4H 25 CELL  
 VERTICAL CENTER OF GRAVITY --- 64.7" APPROX. ENTIRE LOCO, 708 SPRUNG WEIGHT ONLY. CURVATURE - MIN. 20°  
 AIR BRAKE --- W.A.B. CO'S. SCHEDULE NOBEL. DOUBLE END. COMPRESSORS --- 2 G.E. TYPE CPA 32 A-1  
 HAND BRAKE --- PEACOCK. BANDERS --- GRAHAM-WHITE. HEADLIGHTS --- GOLDEN GLOW - E.S.S. CO.  
 COUPLERS --- TYPE 'E' 6' X 8' SHANK-SWIVEL BUTT WITH FARLOW ATTACHMENTS. DRAFT GEAR --- MINER A-94-XB  
 CONTINUOUS RATING 4860 HP AT 65 M.P.H.  
 MAX. DESIGN SPEED 65 M.P.H.

Locos.	CLASS	BUILDER	DATE	TRAC. MOTORS	WT. ON DRIVERS LBS.	TOTAL WT. LBS.
0150-0154	EF-3b	BALD. WEST.	1942	427-N	369000	492000
0155-0159	EF-3a	G.E. CO.	1943	G.E.A. 627-N	360000	493000

N.Y., N. H. & H. R. R.  
 DIAGRAM  
 ELECTRIC LOCOMOTIVES  
 0150-0159  
 DEC. 10, 1961  
 CAB