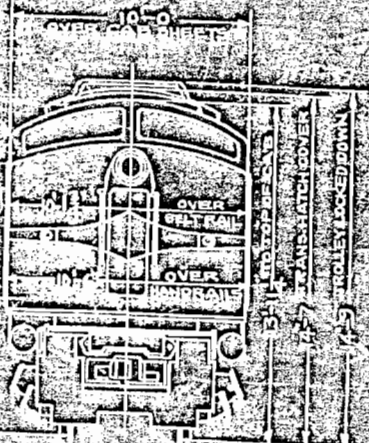


CLASS	LOCOM.
EF 31	150-154
EF 32	155-159

NEW HAVEN



DRIVING WHEELS 37" DIAMETER
 80" POWER COUNTERS
 62" WHEEL BASE
 124" JOURNALS
 LEADING TRUCK WHEELS 12" DIAMETER



BUILDER DATE SERVICE
 TRACTIVE EFFORT MAX. 29000 AT 25% ADHESION TRACTIVE EFFORT CONT. 28000 AT 25% ADH.
 TRAC. MOTORS 4 3500 RPM HORSE POWER 4800
 CONTROL (DOUBLE END) CAR SIGNALS 6 GE 300'S BATTERY EDISON 4 X 4 H 28 CELL
 VERTICAL CENTER OF GRAVITY 6' 7" APPROX. ENTIRE LOCO. TOR SPRING WEIGHT ONLY. CURVATURE MIN. 20'
 AIR BRAKE WABCO SCHEDULE NO. 8 DOUBLE END COMPRESSORS 2 95 PSI CRANK 2 1/2"
 HAND BRAKE BEACON SANDERS GRAHAM WHITE HEADLIGHTS GOLDEN GLOW E 2800
 COMPRESSOR WYRE GRISHANK SWING GUN WITH FARLOW ATTACHMENTS DRAFT GEAR MINER A 2 1/2"
 CONTINUOUS RATING 4350 HP AT 60 MPH
 MAX. DESIGN SPEED 60 MPH
 HEATING BOILER FLOCS 150-154 FEEDWATER 2080 GAL. FUEL OIL 475 GAL.

CLASS	BUILDER	DATE	TRAC. MOTORS	POWER ON DRIVERS	AXIAL WHEELS
EF 31	GE	1912	4	29000	4800
EF 32	GE	1912	4	28000	4800

NO.	DATE	DESCRIPTION	BY

NY, NH & H.P.R.
 NEW HAVEN
 DIAGRAM
 ELECTRIC LOCOMOTIVES
 APPROVED
[Signature]

TRUCK WHEELS