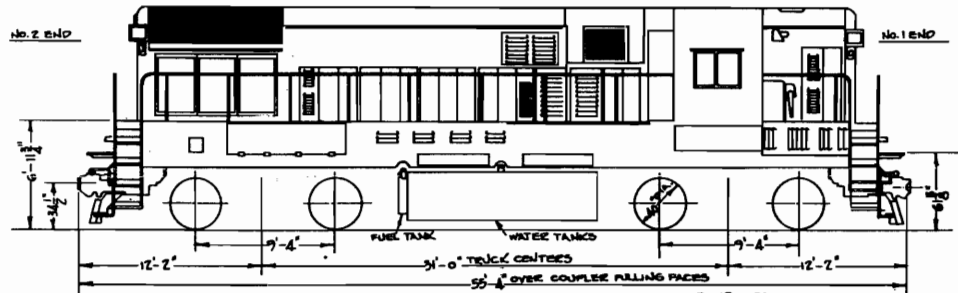


No. 2 END

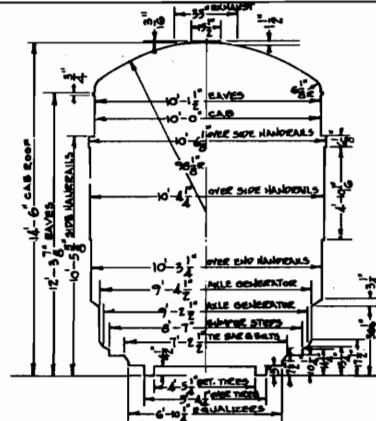
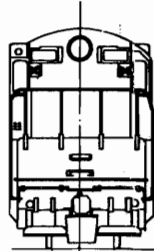


No. 1 END

128,380 LBS.

130,120 LBS.

LIGHT WEIGHT 239,000 LBS.
 ACCESSORIES 19,500 LBS.
 WEIGHT IN WORKING ORDER 258,500 LBS.



LOCO. CLASS AND NUMBER	DEES-6, 1800-1814	AIR COMPRESSOR	WEST S-CD
BUILDER, TYPE AND YEAR	MILBANK-MORSE H-16-44, 1956	AIR COMPRESSOR CAPACITY	262 C.F.M. @ 850 R.P.M.
MAXIMUM TRACTIVE EFFORT	64,625 LBS.	AIR BRAKE SCHEDULE	WEST TYPE 24 EL
CONTINUOUS TRACTIVE EFFORT	48,400 LBS.	BRAKE CYLINDERS	9" x 6"
SPEED AT CONT. TRACTIVE EFFORT	10.7 M.P.H.	BRAKE SHOES	A-30
MAXIMUM DESIGN SPEED	80 M.P.H.	STEAM GENERATOR WITH REMOTE CONTROL-VAPOR	OK-4625
MINIMUM CURVATURE WITH ONE CAR	29°	STEAM GENERATOR STANDBY HEAT	VAPOR
GEAR RATIO	64/19	STEAM GENERATOR FEED WATER CAPACITY	1200 GALS.
DIESEL ENGINE	F.M. MODEL 38 D 8 1/2	TRUCK JOUENAL BEARINGS	6 1/2 TIMKEN
DIESEL ENGINE TYPE	TWO CYCLE OPPOSED PISTON	DRAFT GEAR	MINER CLASS KF-933
DIESEL ENGINE CYLINDERS	8 CYLS.-8 1/2" BORE-10" STROKE	COUPLER	TYPE "E" TOP OPERATED
DIESEL ENGINE H.P.	1800 @ 850 R.P.M.	SANDERS	S-FINE
MAIN GENERATOR	ONE G.E. 56T-56T-CI	SAND CAPACITY	2000 LBS.
AUXILIARY GENERATOR	ONE G.E. 56Y-45-AI	HEADLIGHTS-SCALED BOW LAMP 2 PUL-20 WATTS-200 VOLTS	
ALTERNATOR	ONE F.M. TYPE T2020 FRAME IV-5	WARNING HORNS	I.M.M.B.M. MODEL 4700-3
EXCITER	ONE G.E. 56TA-T-AI	SPEED INDICATOR	BARCO MODEL 3
TRACTION MOTORS	FOUR G.E. 56E-752-EI	BATTERIES	C.&O. TYPE C150 25, 416A.H. CAPY
FUEL CAPACITY	800 GALS.	CAB SIGNAL	6ES-DUAL-DOUBLE END
LUBE OIL CAPACITY	515 GALS.	FIRE EXTINGUISHERS	2-20 LB. ANSUL DRY POWDER
COOLING WATER CAPACITY	17 GALS.	AIR FLOW INDICATOR	WEST TYPE "B"

WHERE USED
 DIESEL ELEC
 LOCO.
 DEES-6
 1800-1814

N.Y., N.H. & H.R.R.
 NEW HAVEN 06110, 1958
 DIAGRAM

DATE	BY	REVISION

CORRECT

APPROVED

E.H. [Signature]

[Signature]

3256520

OR TRK IN
 JAN 17 1958