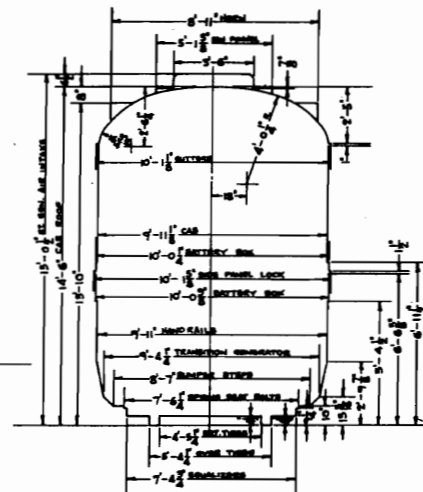
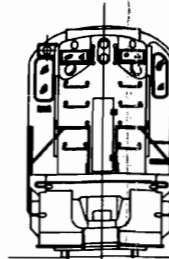


LIGHT WEIGHT..... 256190 LBS.
ACCESSORIES..... 27200 LBS.
WEIGHT IN WORKING ORDER..... 263390 LBS.



LOCO. CLASS & NUMBERS	DBRS-5 NO'S 1400-1414	STEAM GENERATOR	WPR OF-6ES WITH SHUTE CONTROL
BUILDER, TYPE & YEAR	ALCO MODEL R3-11 1956	ST. GEN. - STANDBY HEATING	WAFOR
MAXIMUM TRACTIVE EFFORT	65650*	ST. GEN. - FEEDWATER CAPACITY	1400 GALS.
CONTINUOUS TRACTIVE EFFORT	43400*	TRUCK JOURNAL BEARINGS	6 1/2" TIMKEN
SPEED AT CONT. TRACT. EFFORT	12.7 MPH	DRAFT GEAR	N.M. & S.C. CO. M-260
MAXIMUM DESIGN SPEED	80 MPH	COUPLER	TITELOCK TYPE "F"
MIN. CURVATURE WITH ONE CAR	30°	SANDERS	B - PRIME
GEAR RATIO	64:19	SAND CAPACITY	28 CU. FT.
DIESEL ENGINE - MAKE	ALCO MODEL T51-V TYPE - 4 CYCLE	HEADLIGHTS	2 - 100 WATT - 115 VOLTS 1 - 100 WATT - 115 VOLTS
DIESEL ENGINE - CYLINDERS	12 CYLS - 9" BORE - 10 1/2" STROKE	WARNING HORNS	E - M.M. & M. FIGURE 4700-3
DIESEL ENGINE - HP	1800 AT 1000 RPM	SPEED INDICATOR	BARCO
MAIN GENERATOR	ONE G.E. 50T-561-C1	BATTERIES	KW
AUXILIARY GENERATOR	ONE G.E. 50Y-27-A3	CAB SIGNAL	GRS - DUAL - DOUBLE END
EXCITER	ONE G.E. 50TA-S-A1	FIRE EXTINGUISHERS	TWO - 20# ANSUL DRY POWDER
TRACTION MOTORS	FOUR G.E. 50E-752-E1	AIR FLOW INDICATOR	WEST. TYPE "B"
FUEL CAPACITY	1200 GALS.	VERTICAL CENTER OF GRAVITY	59.9"
LUBE OIL CAPACITY	200 GALS.		
COOLING WATER CAPACITY	250 GALS.		
AIR COMPRESSOR	WEST. S-CDC		
AIR COMPRESSOR CAPACITY	225 CFM AT 1000 RPM		
AIR BRAKE SCHEDULE	24 RL		
BRAKE CYLINDERS	10" X 8"		
BRAKE SHOES	A-50		
DYNAMIC BRAKE	YES		

N.Y., N.H. & H.R.R.
NEW HAVEN APRIL 30, 1956.

DIAGRAM

CORRECT

APPROVED

56510

[Signature]

IN COPY W/VY REISSUED DATE LETTER ASST. CLERK