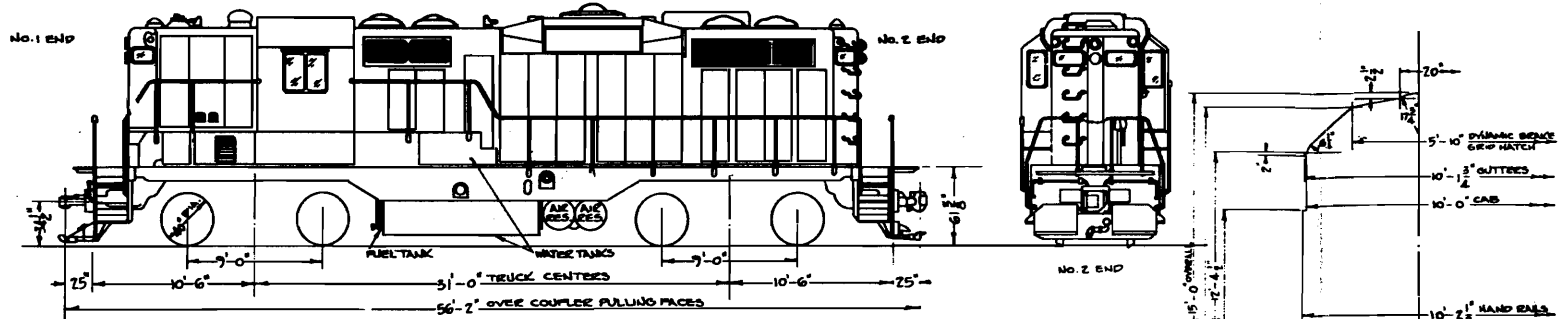


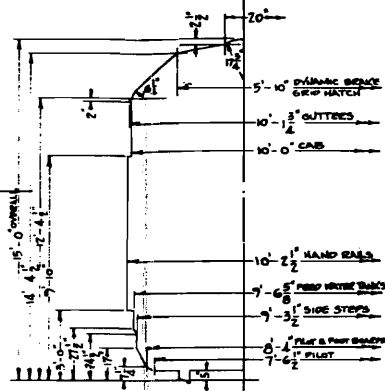
WHERE SHOWN  
FROM THE  
LOOK-UP  
SHEET  
200-1217



130,700 LBS. 128,000 LBS.

LIGHT WEIGHT ACCESSORIES 28,320 LBS.  
WEIGHT IN WORKING ORDER 258,700 LBS.

LOCO. CLASS & NUMBERS	DE 5-4, 1200-1229	STEAM GENERATOR-WITH REMOTE CONTROL-VAPOR OR A625
BUILDER, TYPE & YEAR	EMD, GP-9, 1956	STEAM GENERATOR FEED WATER CAPACITY
MAXIMUM TRACTIVE EFFORT	63,500 LBS.	1200 GALS.
MAXIMUM DESIGN SPEED	83 M.P.H.	STAND-BY HEATING
MIN. CURVATURE WITH ONE CAR	39°	VAPOR
GEAR RATIO	59/10	TRUCK JOURNAL BEARINGS
DIESEL ENGINE-MAKE	EMD 567-C, V-TYPE-2 CYCLE	HYATT 6 1/2"
DIESEL ENGINE-CYLINDERS	16-8 1/2" X 10"	DRAFT GEAR
DIESEL ENGINE-HORSE POWER	1750 @ 835 R.P.M.	N.M. & S.C. CO. M-380
MAIN GENERATOR	EMD TYPE D-4	COUPLER
AUXILIARY GENERATOR	EMD MODEL A-7159	TITELOCK TYPE "P"
TRACTION MOTORS	4-EMD TYPE D-57	SANDERS
ENGINE AIR FILTER	ROTOMANC	8-PRIME
FUEL CAPACITY	800 GALS.	SAND CAPACITY
LUBE OIL CAPACITY	200 GALS.	1800 LBS.
COOLING WATER CAPACITY	227 GALS.	SPEED INDICATOR
AIR COMPRESSOR	GARDNER DENVER W.K.O.	BARCO
AIR COMPRESSOR CAPACITY	235 C.F.M. @ 835 R.P.M.	WARNING HORNS
AIR BRAKES	24 RL	Z-M.M. & M. NO. 4700-3
BRAKE CYLINDERS	9" X 6"	BATTERIES
BRAKE SHOES	A-31	15 EXIDE, 15 GOULD
		CAS SIGNAL
		GES-DUAL-DOUBLE END
		FIRE EXTINGUISHERS
		2-20 LB. ANSUL DRY POWDER
		AIR FLOW INDICATOR
		EMD TYPE
		HEADLIGHTS-2 DUAL SEALED BEAM LAMPS-82 WATT, 200 MATT



DR. CK. IN  
E. L. M. R.

N.Y., N.H. & H.R.R.  
NEW HAVEN JAN. 28, 1958

DIAGRAM

CORRECT APPROVED

FR M LH TRACED 12890 A  
M CUB WHY REISSUED DATE LETTER

56521