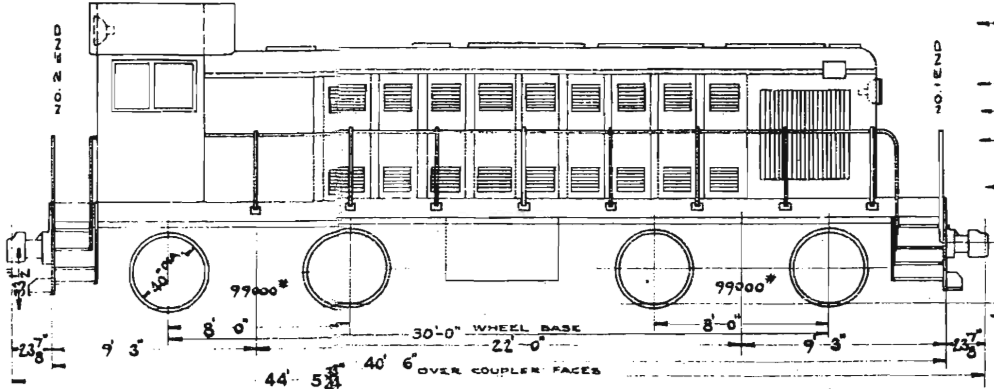


WHERE USED
 DIESEL ELEC.
 LOCOS.
 0931-0995
 DET-3



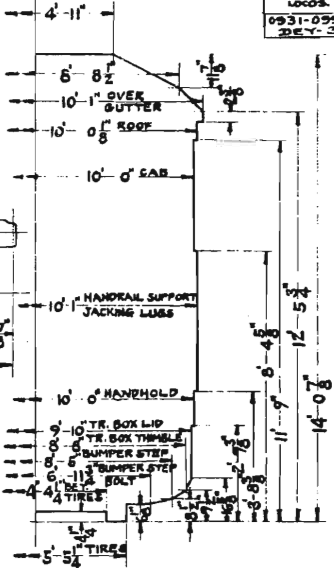
- LOCO. NUMBERS
- TOTAL WEIGHT
- DIESEL ENGINE MAKE
- DIESEL ENGINE CYLINDERS
- DIESEL ENGINE-H.P.
- MAX. TRACTIVE EFFORT-25% ADHESION
- MAX. SPEED
- SPEED AT CONTINUOUS RATING
- TRACTIVE EFFORT-CONTINUOUS RATING
- BUILDER & DATE
- SERVICE
- 2 GEAR RATIO
- 1) MAX. CURVATURE-WITH ONE CAR
- MAX. CURVATURE-ENGINE ONLY
- CONTROL EQUIPMENT
- MAIN GENERATOR
- AUXILIARY GENERATOR
- 2 TRACTION BLOWER
- TRACTION MOTOR
- AIR COMPRESSOR
- DWG. FUEL CAPACITY
- COOLING WATER CAPACITY-TOTAL
- AIR BRAKE
- COUPLERS
- DRAFT GEAR
- SANDERS
- ROCK HAND BRAKE
- E HEADLIGHTS
- BATTERY
- BATTERY

0931-0995
 17800 LBS.
 AMERICAN LUGER CO.
 6-12 1/2 X 13
 668 AT 740 R.P.M.
 49500 LBS.
 60 MILES PER HOUR
 6.1 MILES PER HOUR
 29200 LBS.
 A. L. CO. 1944, 42, 43, 44, 47, 48, 9
 SWITCHING
 19/25
 90 FT. RADIUS
 50 FT. RADIUS
 G.E. TYPE P-SINGLE END
 I.G.E. TYPE G.T.-552-A1
 I.G.E. TYPE G.M.G-137-A1
 B.R. STURTEWANT CO.
 4 G.E. TYPE T31-C1, C2, D2
 W.A.B. CO. TYPE 3-C D
 635 GAL.
 220 GAL.
 W.A.B. CO. SCHEDULE 14-EL
 A.A.R.-TYPE E-6 X 5 SHANK
 N.M. & S.C. CO. TYPE M-17-A
 GRAHAM-WHITE
 AJAX
 2-1/2 PYLE NATIONAL-RECESSED
 EXIDE IRON CLAD-32 CELLS-KT-35A OR
 PHILCO-32 CELLS HRV-35 ©

VERTICAL CENTER OF GRAVITY - 54 1/2" FROM RAIL

~~NOTE: LOCO. 0931-0995
 600 HP AT 700 RPM~~

NOTE:-
 GE 731-C1 MOTORS USED ON 0931-0940.



N. Y., N. H. & H. R. R.
 NEW HAVEN SEPT. 29, 1942

DIAGRAM
DIESEL ELECTRIC LOCOS.
 0931-0995

CORRECT

J. L. Hebel 24827 *[Signature]*

EST. M. E. N. E.

M	H	TO ADD 0984-0985	1-25-49	F	
M	H	TO ADD 0971-0983	1-13-48	E	
M	7/8	ALL LOCOS 660HP AT 740RPM	7-19-46	D.	
M	H	CHANGED AT ©	4-4-46	C	
M	H	TO ADD 0951-0970	8-24-45	B	
M	H	TO CORRECT TOTAL WEIGHT	1-26-44	A	
IN	CK	BY	WHY REISSUED	DATE	LETTER

DR.	TR.	CK.	IN.
HF	RS	MA	