

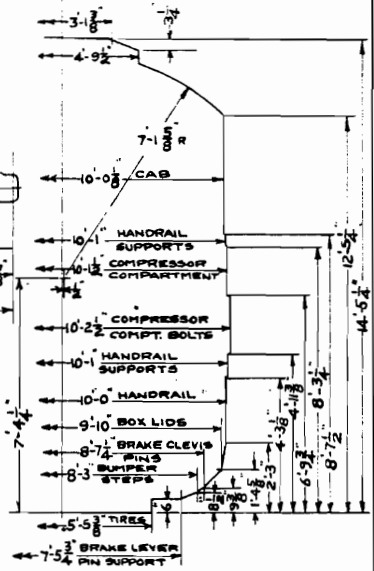
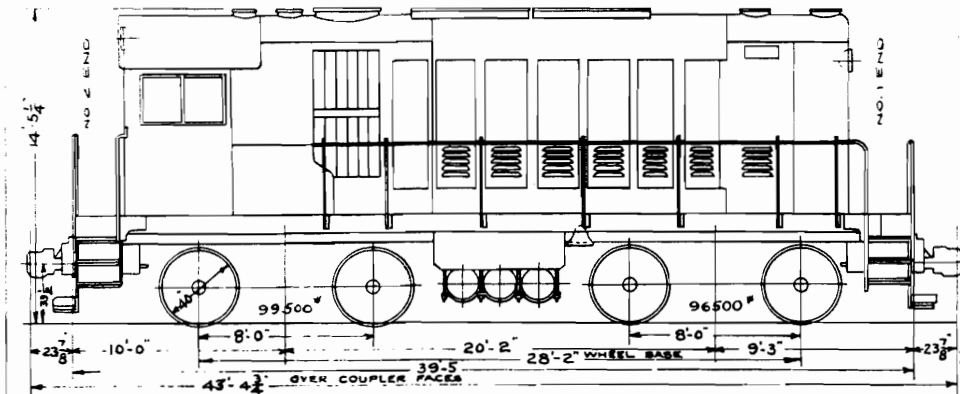
WHERE USED

DIESEL ELEC.

LOCOS.

0921-0930

DEY-15



LOCO NUMBERS
TOTAL WEIGHT
DIESEL ENGINE MAKE
DIESEL ENGINE CYLINDERS
DIESEL ENGINE H.P.
MAX. TRACT EFFORT - 25% ADHESION
MAX. SPEED
SPEED AT CONTINUOUS RATING
TRACT. EFFORT - CONTINUOUS RATING
BUILDER & DATE
SERVICE
GEAR RATIO
MAX. CURVATURE - WITH ONE CAR
MAX. CURVATURE - ENGINE ONLY
CONTROL EQUIPMENT
MAIN GENERATOR
AUXILIARY GENERATOR
TRACTION BLOWER MOTOR
TRACTION MOTOR
RADIATOR FAN MOTOR
AIR COMPRESSOR
FUEL CAPACITY
COOLING WATER CAPACITY
AIR BRAKE
COUPLERS
DRAFT GEAR
SANDERS
HAND BRAKE
HEADLIGHTS
BATTERY

0921-0930
196000 LBS.
AMERICAN LOCO CO.
6-12 1/2" X 13"
660 AT 700 R.P.M.
49000 LBS.
40 MILES PER HOUR
6.0 MILES PER HOUR
28000 LBS.
AMERICAN LOCO CO. 1939-1940
6 SWITCHING
16/68
90 FT. RADIUS
50 FT. RADIUS
G.E. TYPE P DIFFERENTIAL
1 G.E. TYPE GT-551-D1
1 G.E. TYPE GTB-551-C1
1 G.E. TYPE GE-1163-B
4 G.E. TYPE 287-E-51
1 G.E. TYPE GE-1124-J2
1 G.E. TYPE CP-32
625 GALS.
240 GALS.
W.A.B. CO. SCHEDULE 14-E.L.
A.A.R. TYPE "E" 6 1/2 X 8 SHANK
N.M. & S.C.CO. TYPE M-17-A
GRAHAM-WHITE
AJAX
2-12" PYLE NATIONAL RECESSED
EXIDE IRONCLAD-56 CELLS-KT-23A

NOTE -
VERTICAL CENTER OF
GRAVITY - 56 1/2" FROM RAIL

Ⓐ

N. Y. N. H. & H. R. R.
NEW HAVEN JAN. 8, 1940
DIAGRAM
DIESEL ELECTRIC LOCOS.
0921-0930

CORRECT APPROVED
A.M.E. 24507
A.M.E.

M	HF	CHANGED AT	Ⓐ	4-4-46	A
M	CK	BY	WHY REISSUED	DATE	LETTER

FROM ALCO. DWG. 991 S 202880

DR	TR	CK	IN
HF	HF	M	