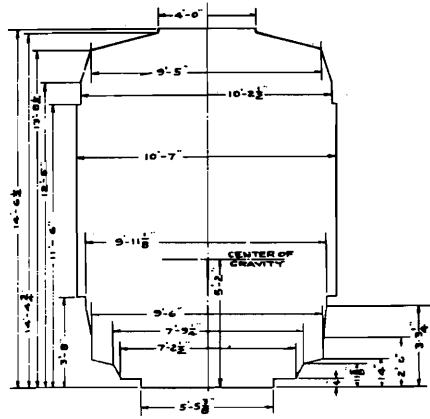
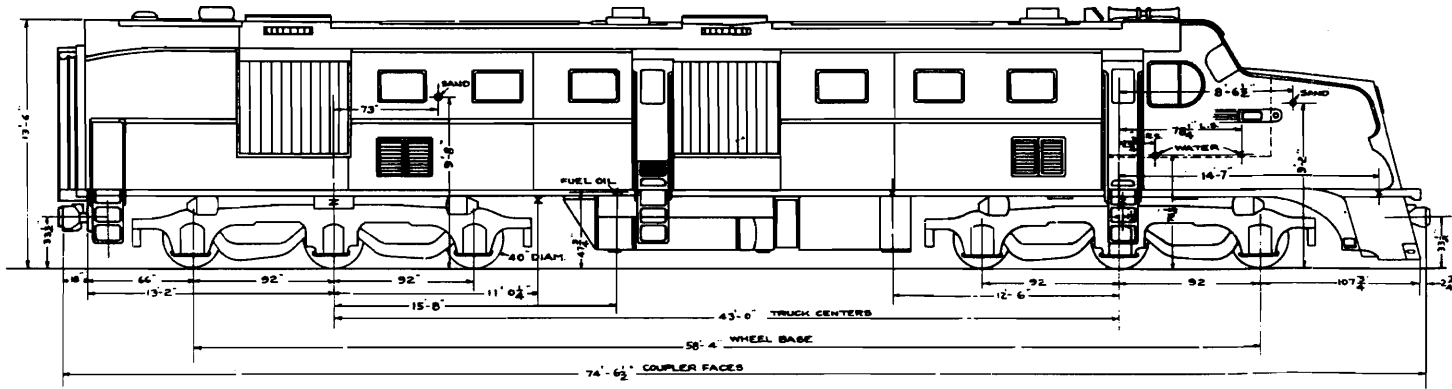


X INDICATES JACKING PADS
 Z INDICATES LIFTING LUGS

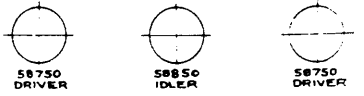


LOCO. NUMBERS
 BUILDER AND YEAR
 MIN. RAD. CURVATURE
 MAX. TRACTIVE EFFORT - 25% ADHESION
 CONT. TRACTIVE EFFORT
 SPEED AT CONT. TRACTIVE EFFORT
 MAX. SPEED - TRACTION MOTORS
 FUEL - ENGINES & BOILER
 WATER - BOILER
 LUBRICATING OIL - EACH ENGINE
 COOLING WATER - EACH ENGINE
 NO. OF SAND BOXES
 TOTAL SAND CAPACITY
 NO. OF ENGINE-GENERATOR POWER PLANTS
 MAKE OF DIESEL ENGINES
 TYPE OF DIESEL ENGINES
 NO. OF CYLINDERS PER ENGINE
 H.P. PER ENGINE
 MAKE & TYPE OF MAIN GENERATORS
 MAKE & TYPE OF AUX. GENERATORS
 MAKE & TYPE OF EXCITERS
 NO. MAKE & TYPE OF TRACTION MOTORS
 GEAR RATIO
 CONTROL
 NO. MAKE & TYPE OF AIR COMPRESSORS
 TOT. CAP. OF AIR COMPRESSORS - FULL SPEED
 TOT. CAP. OF AIR COMPRESSORS - IDLE SPEED
 AIR BRAKES
 TRUCKS
 JOURNAL BEARINGS
 RADIATOR FANS
 TRACTION MOTOR BLOWERS
 DRAFT GEAR - FRONT
 DRAFT GEAR - REAR
 COUPLER - FRONT
 COUPLER - REAR
 FOUNDATION BRAKES
 HAND BRAKE
 SANDERS
 WARNING HORNS
 HEADLIGHTS
 SPEED INDICATOR
 CAB SIGNAL EQUIPMENT
 STEAM HEAT GENERATOR
 MAKE OF BATTERY
 NO. AND TYPE OF CELLS
 VERTICAL CENTER OF GRAVITY

0700-0709
 AMERICAN LOCO. CO. 1941-1942
 21°
 58,750 LBS.
 25,200 LBS.
 25 P.M.H.
 80 P.M.H.
 1200 GALS.
 1000 GALS.
 80 GALS.
 325 GALS.
 4
 1600 LBS.
 2
 ALCO.
 4 CYCLE LOCO. TURBO SUPER-CHARGED
 6 - 12 1/2" x 13"
 1000 AT 740 R.P.M.
 G.E. G.T-557-A
 G.E. G.TB-557-A
 G.E. GY-9-H
 4 G.E. 726
 19/64
 G.E. TYPE P. SINGLE END
 2 W.A.B. 2-CDA
 228 C.F.M.
 108 C.F.M.
 W.A.B. SCH. B-EL
 G.S.C. 6 WHEEL 7 x 10 3/8" JOURNALS
 TIMKEN
 G.E.
 STURTEVANT
 FINER A-94-XB
 N.M. & S.C. M-350-A
 A.A.R. TYPE E 6 1/2" X 18" SHANK
 A.A.R. TYPE E 6 1/2" X 18" SHANK
 A.S.F.
 PEACOCK
 GRAHAM-WHITE
 2 W.A.B. TYPE E-2
 14' PYLE-NATIONAL
 JONES-MOTROLA
 C.R.S. DUAL TYPE
 VAPOR TYPE CFK-4225-2-B
 EXIDE IRONCLAD
 32 HT-35 A
 62 1/2" FROM REAR



WEIGHT ON DRIVERS 235000 LBS
 WEIGHT ON IDLERS 117700 LBS
 TOTAL WEIGHT 352700 LBS



PA	IC	CLASSIFICATION REVISED	4-8-69	B
PA	IC	RELEASED UNDER PROVISIONS OF PATENT OFFICE 35 USC 4610	3-4-67	A
WH	ON	WHY RE-ISSUED	DATE	NOTES

N.Y.N.H.&H.R.R.
 NEW HAVEN JAN. 24, 1971
 DIAGRAM
 0700-0709
 CORRECT APPROVED
 55971