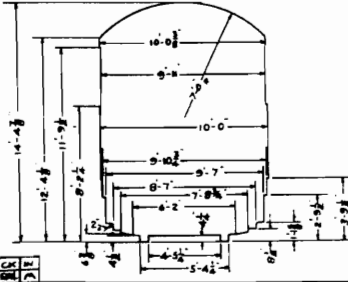
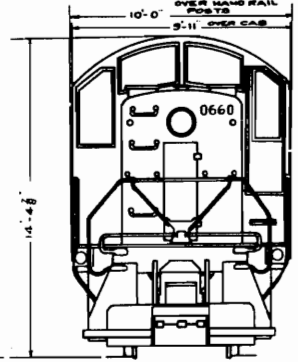
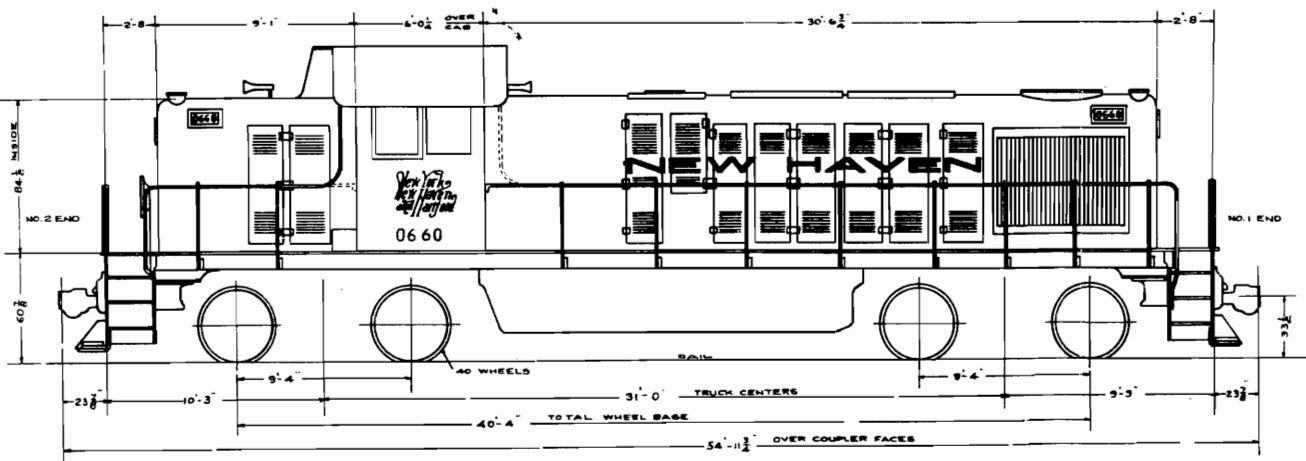
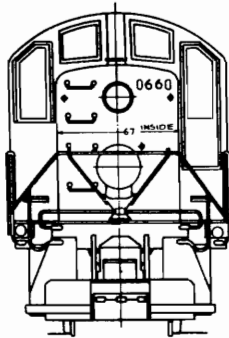


WHERE USED
 SPECIFIC
 LOGS
 DESIG-10
 0660-0671



LOCO NOS.	0660-0671	HAND BRAKE	AJAX
BUILDER & YEAR	AMERICAN LOCO CO. 1948	TRUCKS	FOUR WHEEL EQUALIZED
MAX. TRACT. EFFORT AT 25% ADH.	60750 LBS.	JOURNAL BEARINGS	TIMKEN 7"x14"
CONTINUOUS TRACT EFFORT	34000 LBS.	RADIATOR FAN	FOUR BLADE-APHONIC 45"
SPEED AT CONT. TRACT EFFORT	8 M.P.H.	TRAC. MOTOR BLOWERS	TWO-BF STURTEVANT-BELT DRIVE
MAX. DESIGN SPEED	60 M.P.H.	DRAFT GEAR	MINER A-22-18
FUEL CAPACITY	800 GALS.	COUPLER	A. A. R. TYPE "E"
LUBE OIL- DIESEL ENGINE	80 GALS.	WARNING HORNS	TWO- WAB E-2
COOLING WATER- DIESEL ENGINE	240 GALS.	HEADLIGHTS	14" PYLE NAT.-PREFOCUS BULB
NO. OF SAND BOXES	4	STEAM GENERATOR	V.C.H. CO. DRK-4516
TOTAL SAND CAPACITY	2700 LBS.	FEED WATER- STM. GEN.	800 GALS.
SANDERS- ALL WHEELS	GRAHAM- WHITE	OPERATING CAB HEATING	ENGINE COOLING WATER
DIESEL ENGINE- MAKE	ONE ALCO.	FIRE EXTINGUISHER	ONE 1 GAL. PULVER ONE 15 LB. SUPER LUX
DIESEL ENGINE- TYPE	4 STROKE CYCL. TURBO SUPER CH	BATTERY- MAKE	ELEC. STORAGE BATTERY CO.
DIESEL ENG. NO. OF CYLS.	6 - 12 1/2" x 13"	BATTERY- NO. & TYPE OF CELLS	32 CELL- TYPE MV-17 D
DIESEL ENG. HORSE POWER	1000 AT 740 RPM	VERT. CENTER OF GRAVITY	
MAIN GEN. NO., MAKE, TYPE	ONE GE. GT-553A	WINDOW WIPERS	FOUR-HAYES AIR PUSH "STD."
EXCITER- AUX. GENERATOR NO. MAKE TYPE	ONE GE. GMG-139A-2 BELT DRVE.	BELL RINGER	TRANSPORTATION DEVICES CO.
		MIN. CURVATURE- LOCO. ONLY	27°
TRAC MOTORS NO. MAKE- TYPE	FOUR GE. 731		
GEAR RATIO	16/75		
CONTROL	TYPE P- MULTIPLE OPERATION		
AIR COMP. NO. MAKE- TYPE	WAB- TYPE 3-CD		
AIR COMP. - CAP. FULL SPEED	228 CFM		
AIR COMP. - CAP. IDLE SPEED	83 CFM		
AIR BRAKES	WAB 14 EL		
FOUNDATION BRAKES			
BRAKE CYLINDERS	EIGHT- 9"x8"		

LOADED WT LIGHT WT SUPPLIES	REAR TRUCK 119,000 LBS	FRONT TRUCK 124,000 LBS	TOTAL 243,000 LBS 225,200 LBS 17,800 LBS
	ALL WEIGHT ON DRIVERS		

N. Y., N. H. & H. R. R.
 NEW HAVEN APR. 29 1948

DIAGRAM
 0660-0671

APPROVED	BY	DATE	LETTER

TO ADD WEIGHT DISTRIBUTION 6-25-50 B
 TO ADD LOCS 0670-0671 4-4-47 A
 IN CH BY: W. J. REISSNER DATE: 4-4-47 LET: A
 ASST. P.L.E. 56255