

DESCRIPTIVE DATA

ALL STEEL CAR LOW ALLOY HIGH TENSILE STRENGTH CONSTRUCTION THROUGHOUT. BUILT 1949 BY PULLMAN STANDARD CAR MFG. CO.

EXTERIOR OF CAR - WINDOW PANEL BETWEEN BODY ENDS AND ALSO ROOF PAINTED "HINTER GREEN", ABOVE AND BELOW WINDOWS STAINLESS STEEL FLUTED MOULDINGS. ENDS OF CAR STAINLESS STEEL EXTERIOR. INTERIOR TRIM AND SOME STRUCTURAL DETAILS ARE ALUMINUM.

AVERAGE WEIGHT OF CAR WITHOUT PASSENGERS AND WATER = 152500 LBS. KITCHEN END = 17950 LBS. OPPOSITE KITCHEN END = 72950 LBS.

AVERAGE WEIGHT OF CAR BODY WITHOUT PASSENGERS = 102650 LBS. TRUCK WEIGHT, KITCHEN END 24600 LBS. OPPOSITE KITCHEN END = 25150 LBS.

CARS EQUIPPED WITH FRIGIDAIRE 5 TON SPLIT-SUAP AIR COND. SYSTEM HAVING "DOORS" AIR PURIFIERS, METAL FILTERS, AND DUCT TYPE AIR DELIVERY WITH VAPOUR COB. FULL AUTOMATIC TEMPERATURE CONTROL FOR HEATING AND COOLING. ELECTRICAL POWER FOR ENTIRE CAR FURNISHED BY GENERAL ELECTRIC CO. BODY HUNG 600W MOTOR (95 K.W. GENERATOR AND 15 H.P. A.C. MOTOR) WITH GENERAL ELECTRIC COB. GENERATOR AND VOLTAGE CONTROLS.

LIGHTING - SAFETY COB. CONTINUOUS CENTRELINE FLUORESCENT FIXTURES IN DINING COMPARTMENT. FLUORESCENT FIXTURES IN PASSAGEWAY, OVER BAR, BOOTH SECTION AND KITCHEN. SAFETY COB. 1 1/2 K.W. MOTOR ALTERNATOR. INCANDESCENT FIXTURES IN FOOD LOCKERS, CLOTHES LOCKERS, ELECTRIC LOCKER AND WORKING SPACE IN KITCHEN. DOUBLE INDICATION LOW-LEVEL DRESSSEL BUILT-IN ELECTRIC MARKER LAMPS.

TRUCKS - 6-6 C.COB. 6 WHEEL ALL COIL SPRING OUTSIDE SWING HANGER WITH 5 1/2" PAPER ROLLER BEARINGS AND MONROE SHOCK ABSORBERS. NOISE INSULATED WITH FABRIKRA PADS AND EQUIPPED WITH TRUCK MOUNTED 16 1/2" X 10" BRAKE CYLINDERS AND A.S.P. SIMPLEX CLASH BRAKE.

FURNITURE - CONTINUOUS WALL SEAT ARRANGEMENT WITH 2 BOOTHS AT END OF DINING ROOM. CUSHIONS OF FOAM RUBBER, HAIR AND SPRING CONSTRUCTION, BACKS OF HAIR AND SPRING CONSTRUCTION. ALL UPHOLSTERED IN GOODALL COB. REDTILE. TABLES WITH WOOD TOPS IMPREGNATED WITH FORMICA HAVING CAST IRON PROBSTALS.

FLOOR COVERING - HOOD RUBBER TILE IN DINING COMPARTMENT AND PASSAGEWAY. WOOD FLOOR JACKS IN BAR SECTION, KITCHEN AND PANTRY.

WINDOWS - FILLED ALUMINUM DEBRATED 3/8" X 1/2" SOLER "HARD" RESISTANT GLASS OUTSIDE, 1/2" LAMINATED SAFETY PLATE GLASS INSIDE.

STEAM HEAT - VAPOUR COB. UNIT Fitted WITH INNER TUBE RETURN-THERMOSTATICALLY CONTROLLED. CARS EQUIPPED WITH 2 1/2" STEAM TRAINLINE, VAPOUR COB. FLANGED END VALVES AND 2" BARCO STEAM HEAT CONNECTORS.

AIR BRACKS - W.A.S. COB. SCHEDULE D-ZZ-P WITH D-ZZ-AIR CONTROL VALVE, P-6 RELAY VALVE AND C-56 DY-90 AUTOMATIC BRACK ADJUSTERS. PEACOCK WHEEL TYPE POWER HAIR BRAKES AT EACH END OF CAR.

INSULATION - CONDUIT-MANVILLE COB. SPONGELITE TYPE "A" ROCKWOOL FLOOR, ROOF AND SIDES 5" THICK - ENDS 2" THICK.

BATTERY - 80 - 500 BT CELL 575-51A, 602 AMP. HOUR CAPACITY. CURRENT SUPPLIED BY GENERATOR WHICH ALSO IS USED FOR AIR COND.

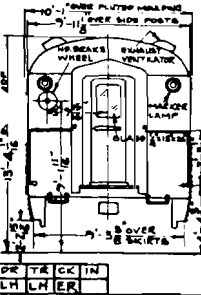
DEPT. BEAR - WAUGHMATT TWIN CUSHION WM-6-PP. CAST STEEL ROTARY OPERATED TIGHT LOCK COUPLER WITH CAST STEEL YOKER. 14 SUPERS WIDER.

CARS EQUIPPED WITH WINDOW GUARD BARS IN PASSAGEWAY, PEAPES AND PANTASOTE CURTAINS IN DINING ROOM, PASSAGEWAY, AND BOOTH SECTION, NATIONAL PNEUMATIC COB. AUTOMATIC BOB ROOF OPERATORS.

CARS EQUIPPED WITH SAFETY COB. 2 K.W. MOTOR ALTERNATOR FOR BUMPING CURRENTLY TO KITCHEN ELECTRICAL EQUIPMENT. GENERATOR PILOT LAMP IS GREEN, PUBLIC ADDRESS SYSTEM PILOT LAMP IS AMBER, COMPRESSOR PILOT LAMP IS WHITE.

CARS EQUIPPED WITH STAINLESS STEEL CAR NUMBER AND MONOGRAM PLATES.

CARS ARE EQUIPPED WITH OVERHEAD STORAGE COLD WATER TANKS ABOVE KITCHEN AND BAR. TOTAL CAPACITY - 408 GALLONS WATER FED BY AIR PRESSURE TO AUTOMATIC HOT WATER HEATER LOCATED UNDER CAR FURNISHED BY THE McDONALD CO. HEATER FURNISHES HOT WATER TO WASH FACILITIES IN KITCHEN AND BAR. ALL HOT AND COLD WATER TO KITCHEN IS FILTERED. COLD DRINKING WATER IS TREATED BY ULTRA-VIOLET LAMPS.



N.Y., N.H. & H.R.R.
NEW HAVEN
OCT. 6, 1949

DIAGRAM

STAINLESS STEEL SHEATHED STREAMLINED
GRILL CARS 750-764

CORRECT

APPROVED

L. P. Schell 25421 *Kenneth C. Miller*
ASST. M.E. C.M.E.