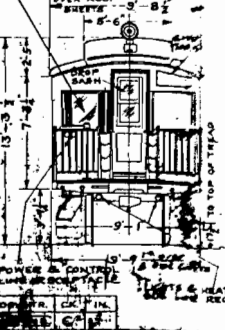
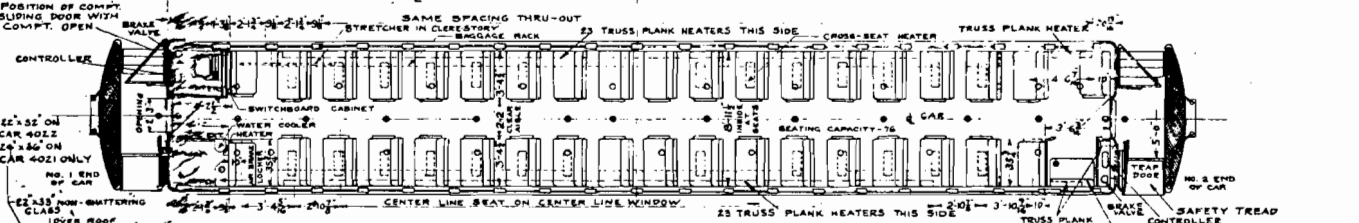
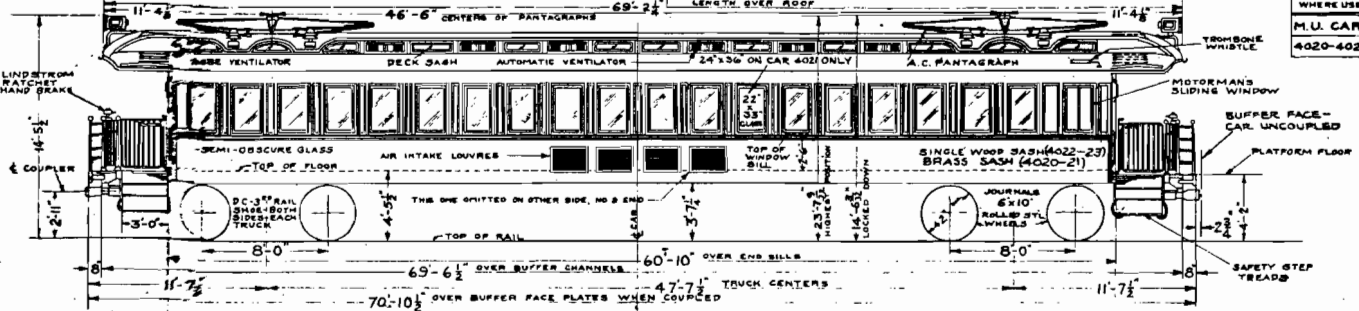


WHERE USED
M.U. CARS
 4020-4023



ALL STEEL CAR - BUILT 1909; BUILDER - STD. STEEL CAR CO.
 WEIGHT OF CAR COMPLETE - 173480 LBS. WEIGHT OF CAR BODY - 101400 LBS (FULLY EQUIPPED)
 WEIGHT OF EACH TRUCK - 20540 LBS. ELECTRICAL EQUIPMENT INSTALLED AT STD STEEL CAR CO.
 MOTORS - WESTINGHOUSE #156. WEIGHT OF MOTORS & CONTROL EQUIPMENT - 59835 LBS.
 BUFFER - RADIAL - WITH MINER A-2. P. FRICTION DRAFT GEAR
 HOPPER - DRY. SEATS - HALE & HILBURN. SEATING CAPACITY - 76. AS SHOWN
 HEADLIGHTS - MODIFIED DRESSSEL WITH GOLDEN GLOW REFLECTOR
 HEATERS - TRUSS PLANK - 52 - C.C.H. CO. 2035 -- CROSS SEAT - 26 C.C.H. CO. 1115JL3, CAB - 4 C.C.H. CO. 2035
 LAMPS - GAUGE - 2, NUMBER - 2, TYPE A-7, 15 WATTS, 32 VOLTS. HEADLIGHT - 2, TYPE P-25, 250 WATTS, 32 VOLTS
 TRUCK - 6'x10" WITH SINGLE SHOE BRAKES, BUILT BY STD. MOTOR TRUCK CO. - A.R.A. TYPE JOURNALS
 AIR BRAKES - WESTINGHOUSE - SCHEDULE ANUE 2-RH-1, ELECTRO-PNEUMATIC BRAKE
 ALL HEIGHTS SHOWN COVER LIGHT CAR
 CARS EQUIPPED WITH WESTINGHOUSE DOUBLE END CONTROL.
 O BODY CEILING LAMP - 600 VOLT BUS LINE CIRCUIT.
 O BODY CEILING LAMP - 32 VOLT BATTERY CIRCUIT.
 CARS EQUIPPED WITH CAR ADVERTISING RACKS & WEST. TROMBONE WHISTLES
 SEATS COVERED WITH PATASOTE
 MOTORS HAVE FLEXIBLE GEAR DRIVE
 ADVERTISING BOARDS ON SALOON & BODY
 END BULKHEADS
 TRUSS PLANK HEATERS IN CABS & SALOON

POWER RATING - A.C.
 TRACTIVE EFFORT CONTINUOUS @ 5 MPH 8600
 TRACTIVE EFFORT ONE HOUR @ 25 MPH 8000
 TRACTIVE EFFORT MOMENTARY (MAX) 10500

THIS ONE SUPERSEDES BK. 1483-A

N.Y. N.H. & H.R.R.
 NEW HAVEN MAY 6, 1922

DIAGRAM
M.U. AC-DC MOTOR CARS
4020-4023

APPROVED: *[Signature]*
 23680

NO.	DATE	BY	REASON
5-31-22	14	B	LOCKED DOWN POSITION OF PANTAGRAPH CHANGED TO 14" GAGE FROM 14" GAGE
2-23-23	2	A	HEIGHT POSITION OF RAILWAY WATTS 23-6" LOCKED DOWN POSITION OF RAILWAY WATTS 23-6"

NOTE: WEIGHT OF TRUCKS SHOWN IS WITHOUT MOTORS.
 RECEPTACLE