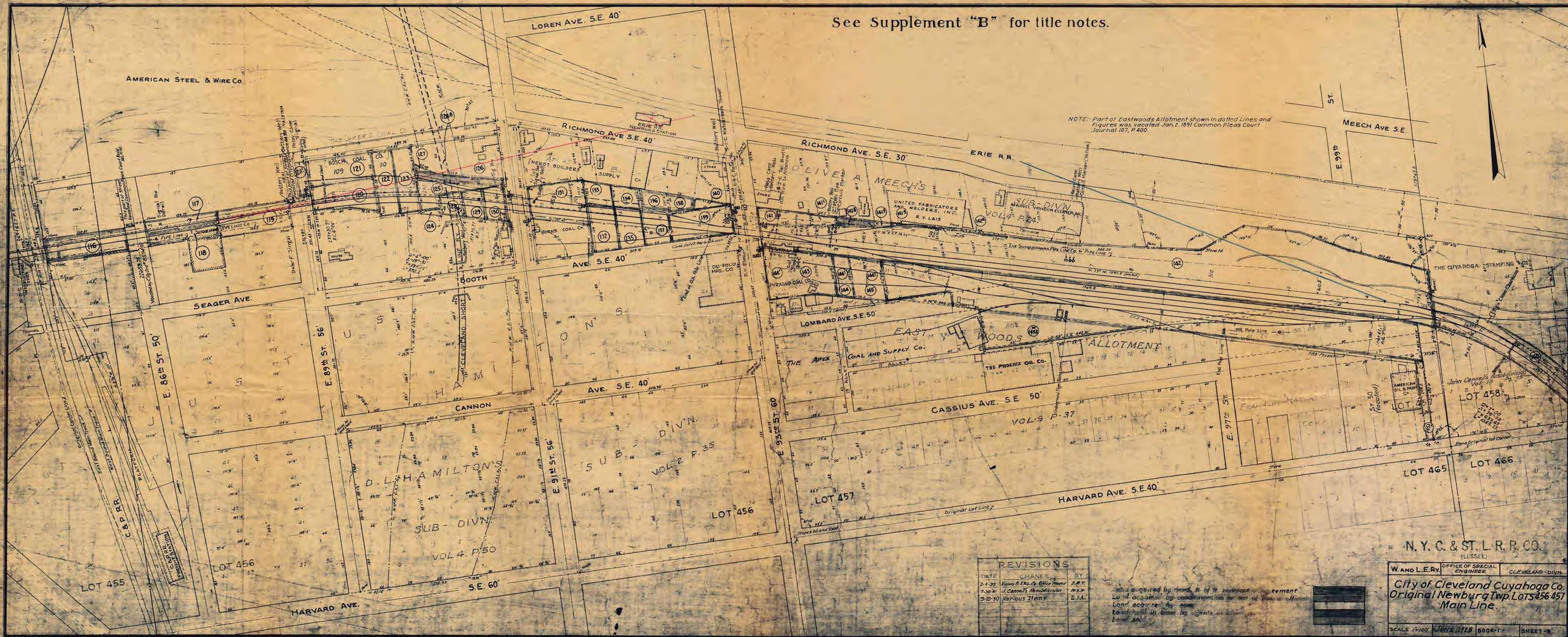


See Supplement "B" for title notes.



NOTE- Part of Eastwoods Allotment shown in dotted lines and figures was vacated Jan. 2, 1891 Common Pleas Court Journal 107, P. 400.

REVISIONS		
DATE	CHANGE	BY
2-1-39	Various Items	A.M.T.
7-30-41	J. Connell's Resubdivision	M.S.N.
9-10-50	Various Items	E.J.A.

Land acquired by lease, etc. of the railroad...
 Land acquired by condemnation...
 Land acquired by...
 Land...
 Land...

N. Y. C. & ST. L. R. R. CO.
 (LESSEE)
 W. AND L. E. RY. OFFICE OF SPECIAL ENGINEER CLEVELAND-DIVN.
City of Newburg Cuyahoga Co.
Original Newburg Twp. Lots 456-457
Main Line.
 SCALE 1"=100' JUNE 1928 500X1 SHEET 5