

*Agreed  
to the  
plan*

45 - 1  
56 - 6  
75 - 3  
88 - 1  
98 - 1  
110 - 1  
13

Revised Jan. 16, 1943  
" " 12, 1943  
Val. #70

CHARLESTON, ILL.

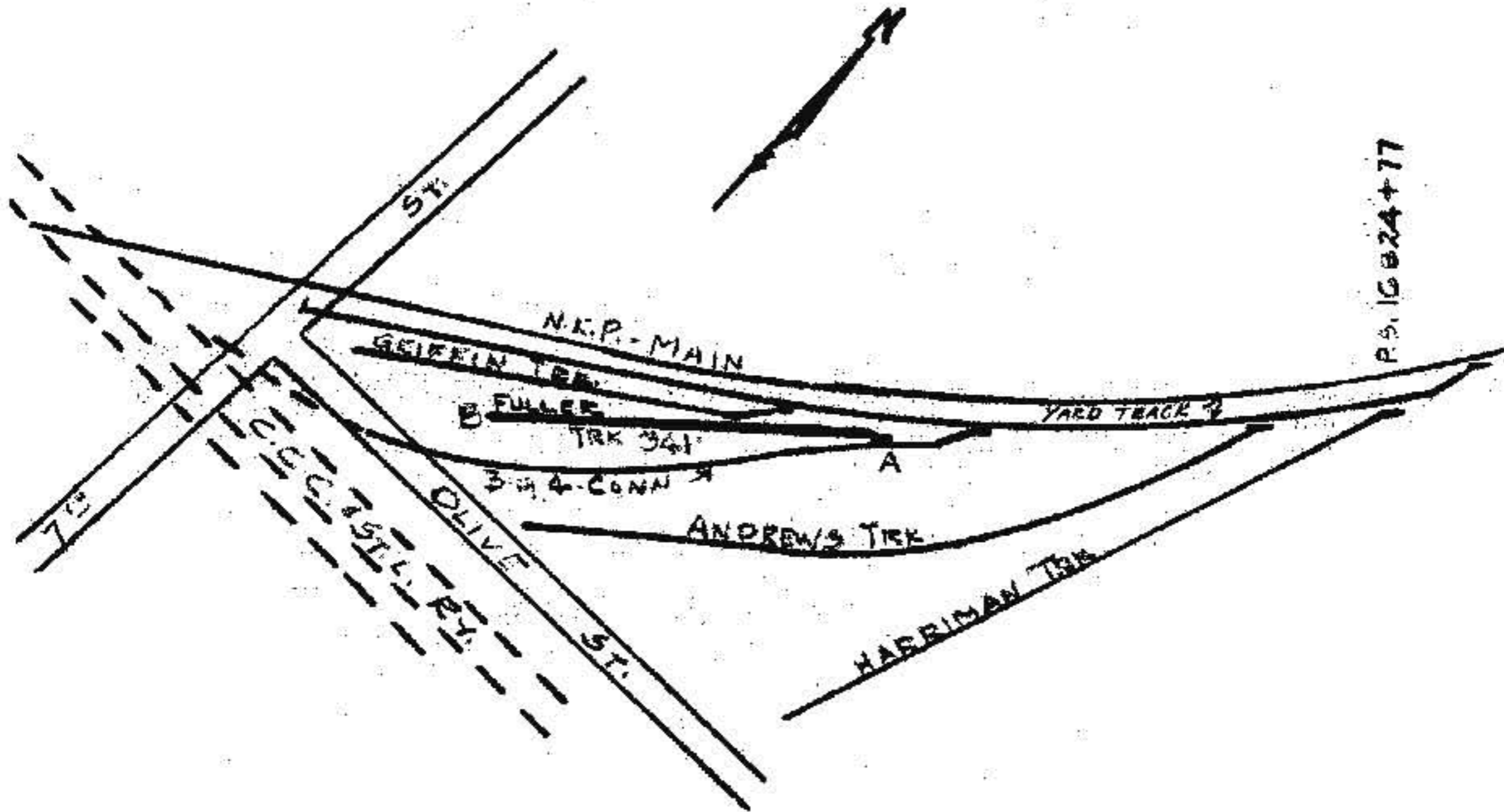
FULLER TRACK

No agreement

Chief Engr. File 51640  
Dist. " File

A to B (Purple)

The NKP owns and maintains entire track,  
341 feet.



N. Y. C. & ST. L. R. R.  
MAR 25 1943  
CHARLESTON, ILL.

FULLER TRACK

CHARLESTON, ILL.

VAL. #70

C-16833  
2318

PAM  
3-15-43

*Handwritten notes:*  
88999  
11111  
11111  
11111

Rev. 3-10-1937  
" 1-12-1943

CHARLESTON, ILL.

FIG 4 CONNECTION

VAL. #69

Letter Agreement dated 7-8-1924 Doc C-3568

Chief Engr. File  
Div. " " 319-50

- A to B (Purple) NKP owns and maintains at its own expense 569 feet.
- B to C (Green) CCC & St. L. Ry. owns and maintains at its own expense 216 feet.

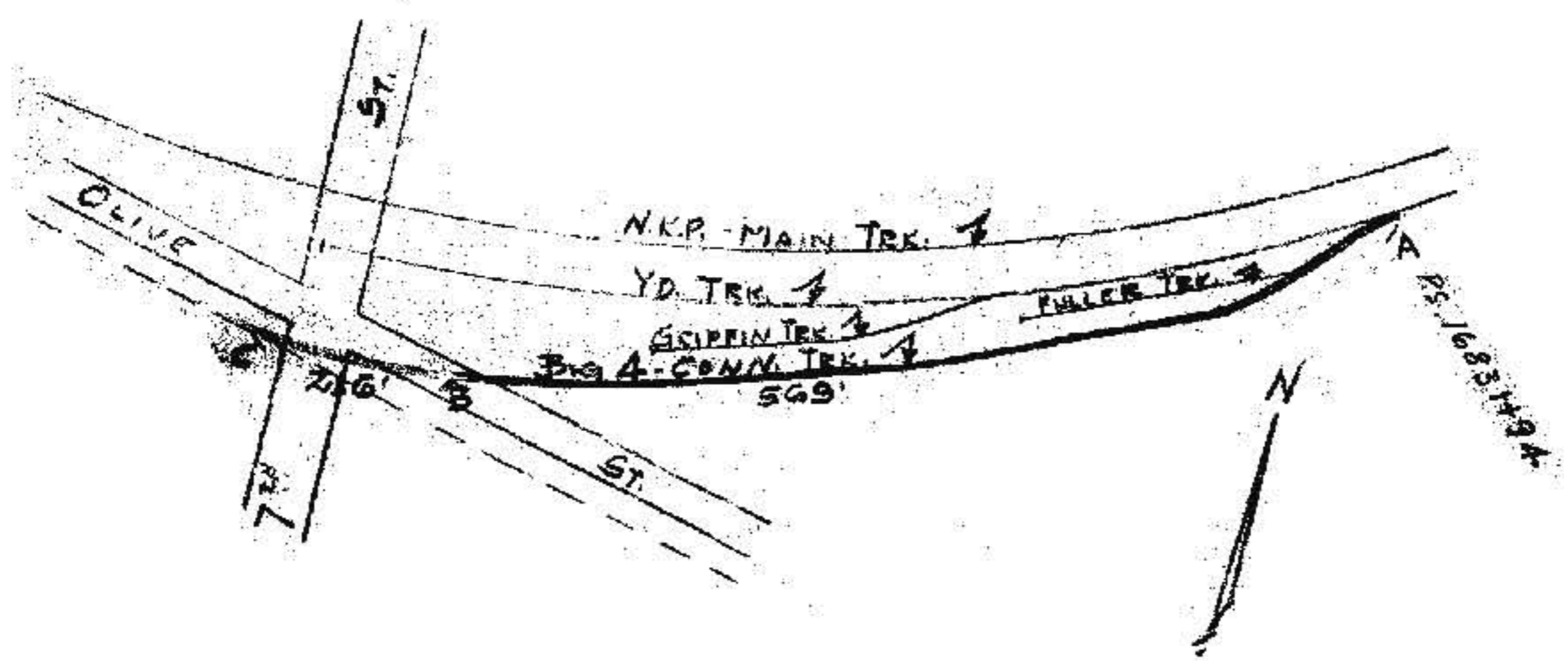


FIG 4 CONNECTION

CHARLESTON, ILL.  
C-16831  
2318

VAL. #69

*Handwritten:*  
PAM  
3-16-43

4-C - 1  
 5-C - 6  
 7-C - 3  
 8-C - 1  
 9-C - 1  
 11-C - 1  
 13

Rev. Nov. 16, 1934  
 " Jan. 12, 1943

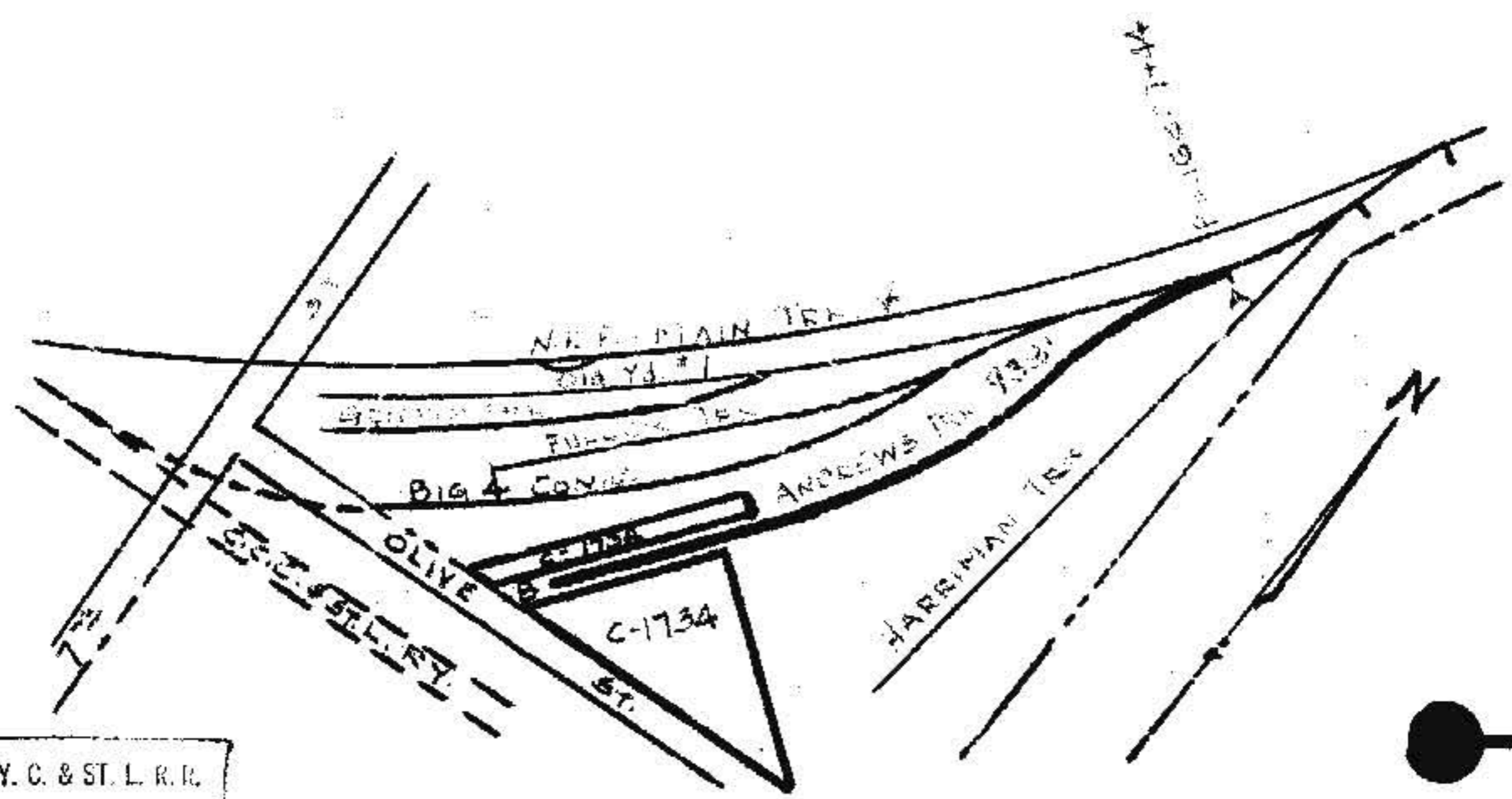
CHARLESTON, ILL.

ANDREWS TRACK  
 No Track Agreement  
 Lease dated 4-1-1920

Doc C-1734

VAL. #68  
 Chief Engr. File I  
 Dist. " " 560-1014  
 560-1017  
 560-118

A to B (Purple) NKP owns and maintains at its own expense 938 feet.  
 (Purple) Under Doc C-1734 the Andrews Lumber & Milling Co. uses 33230 sq. ft. of land for which it pays a fixed amount per year, payable in advance.  
 Milling Co. shall assume taxes and assessments on land and upon any improvements owned by it on same.  
 Milling Co. shall maintain premises at its entire expense.  
 Document may be cancelled on 30 days notice.



N. Y. C. & ST. L. R. R.  
 MAR 25 1943  
 CHARLESTON, ILL.

ANDREWS TRACK

CHARLESTON, ILL.  
 C-16827  
 2318

VAL. #68

FORM  
 3-11-43