

COMPLETE CAT# & QTY. NO.	CONNECTION STYLE	LINE
C-285-COP	1	1
C-285-CNP	2	2

THE NEW YORK, CHICAGO & ST. LOUIS R. R. CO.

MECHANICAL DEPARTMENT

CLEVELAND, OHIO

DATE Oct. 9 1928

# ILLUMINATED NUMBER BOX

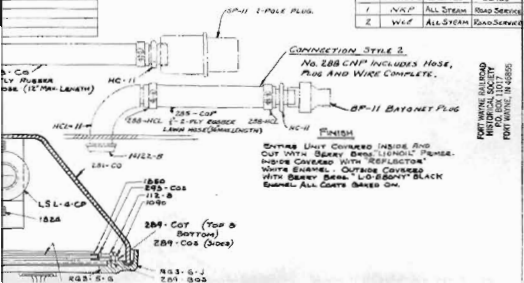
DRAWING 5

## 54-3-302

LINE	DISTRICT	ENGINE	CLASS
1	NKP	ALL STEAM	ROAD SERVICE
2	W&P	ALL STEAM	ROAD SERVICE

*NOTE*  
 NUMBERS SHOWN ARE  
 PYLE - NATIONAL CO.  
 CATALOG NUMBERS.

(FOR STYLE 2)



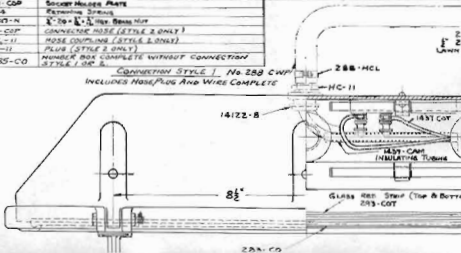
CONNECTION STYLE 2  
 NO. 285 CNP INCLUDES HOSE,  
 PLUG AND WIRE COMPLETE.

ENTRANCE UNIT COVERED INSIDE AND  
 OUT WITH BERRY BRASS "LIGNOL" PAPER.  
 INSIDE COVERED WITH "REFLECTOR"  
 WHITE ENAMEL. OUTSIDE COVERED  
 WITH BERRY BRASS "LO-BEONY" BLACK  
 ENAMEL ALL COATS BAKED ON.

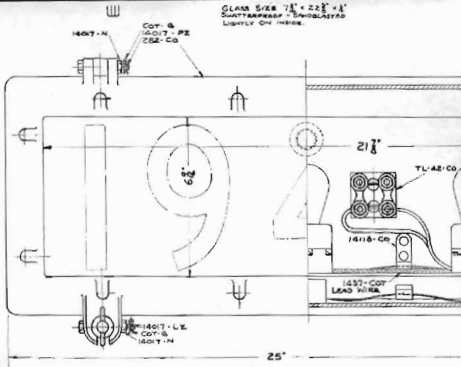
FORT WAYNE RAILROAD  
 HISTORICAL SOCIETY  
 P.O. BOX 11017  
 FORT WAYNE, IN 46895

1	172-C	10-32 x 1/2 RO. HX. BRASS MAIN SCREEN	1	1861-CBP	ONE DIFFUSING GLASS
1	281-CO	BODY	2	1863-R	WIRE NUT LATCH
1	282-CO	DOOR	1	1850	CHANNEL GASKET
1	283-CO	FRONT DOOR COVER GLASS	2	1407-LZ	LATCH PIN
	284-SA	SOCKET ASSEM. INC. (1) 1811-COP (1) 1472-N (1) 1937-CAM (1) LSL-4-CP & (2) 1437-COT	2	1407-PL	HINGE PIN
1	285-CO	CONNECTOR HOSE (STYLE 1 ONLY)	2	1411B-CO	SOCKET PLATE RET. CLIP
2	285-HCL	HOSE CLAMP	1	1412-B	1/2" (SALV.) GROUND BUSHING
1	289-803	GLASS POSITIONING GASKET	4	COT-6	COTTER PIN
2	284-COS	GLASS (SIDE) GASKET	1-2	HC-11	HOSE CLAMPING (2 FOR STYLE 1)
2	289-COT	GLASS (TOP & BOTTOM) GASKET	3	LSL-4-CP	SOCKET
2	293-COS	GLASS RETAINING (SIDE) STRIP	1	283-S-B	FRONT GLASS PACKING
2	293-COT	GLASS RETAINING (TOP & BOT) STRIP	1	283-G-J	DOOR BODY PACKING
12	1090	KIT TO LOCK WASHER	1	5P-11	PLUG (STYLE 1 ONLY)
2	1437-CAM	INSULATING TUBING	1	TL-42-CO	TERMINAL BLOCK
2	1437-COT	LEAD WIRE	2	1411B-CB	SOCKET PLATE RET. CLIP
1	1811-COP	SOCKET HOLDER PLATE	6	1472-N	3-32 HEX. BRASS NUT
4	1824	RETAINING SPRING			
4	1407-N	1/2" 20 x 1/2" HEX. BRASS NUT			
1	285-COP	CONNECTOR HOSE (STYLE 2 ONLY)			
1	HCL-11	HOSE COUPLING (STYLE 2 ONLY)			
1	CP-11	PLUG (STYLE 2 ONLY)			
1	C-285-CO	NUMBER BOX COMPLETE WITHOUT CONNECTION STYLE 1 OR 2.			

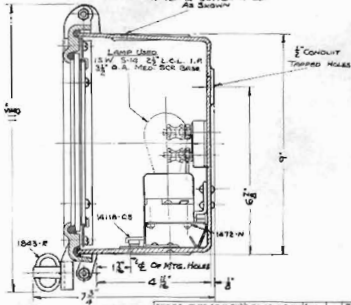
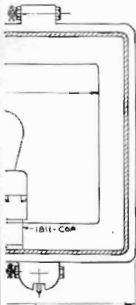
CONNECTION STYLE 1, No. 288 CWP  
INCLUDES HOSE/PLUG AND WIRE COMPLETE



GLASS SIZE  $7\frac{1}{8}'' \times 22\frac{1}{2}'' \times \frac{1}{8}''$   
SHATTERPROOF - SANDBLASTED  
LIGHTLY ON INSIDE.



1841-COP

OPAL DIFFUSING  
PANEL - APPROX.  $6\frac{1}{2} \times 2\frac{1}{2} \times \frac{1}{8}$  $\frac{1}{2}$ " DIA.  $\times \frac{1}{8}$ " DEEP C'T BORE FOR  
MOUNTING HOLE SPACED  
AT TOP & BOTTOM OF BOX  
AS SHOWNLAMP USED  
15 W S-14 2 $\frac{1}{2}$ " L.C.L. I.P.  
 $3\frac{1}{2}$ " O.A. MED. SCR. BASE $\frac{1}{2}$ " CONDUIT  
TAPPED HOLESSTYLE 2, PLUG SP-11 CHINA TO SP-11 END  
HOSE FROM EX TO IN.

W/LE DISY AND STYLE 2 ADDED.

DESCRIPTION

2-14	SP	8.5	1/4	6
2-14	SP	8.5	1/4	6
DATE	CH.	INT.	REV.	