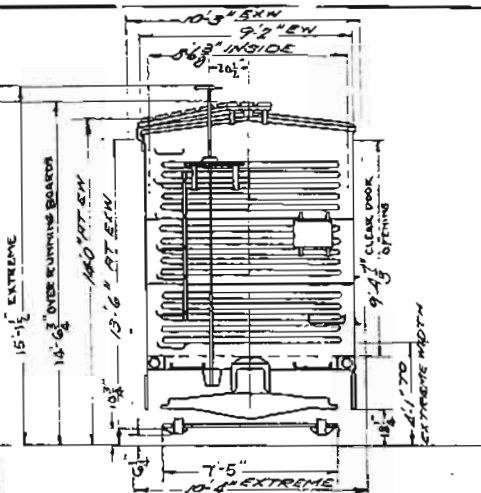


NOTE: THIS DOOR ON EACH SIDE OF CAR BLOCKED CLOSED



THIS DIAGRAM SHOWS CARS CONVERTED FROM 20000 - 20999 SERIES OTHER CARS IN THIS SERIES WERE TAKEN FROM 19000-19999 AND ARE SHOWN ON DIAGRAM-GROUP-3 SHEET-5

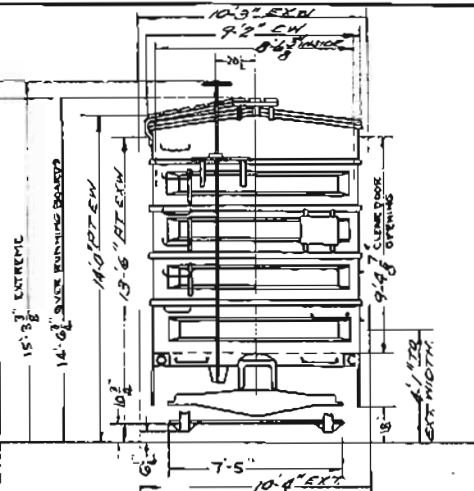
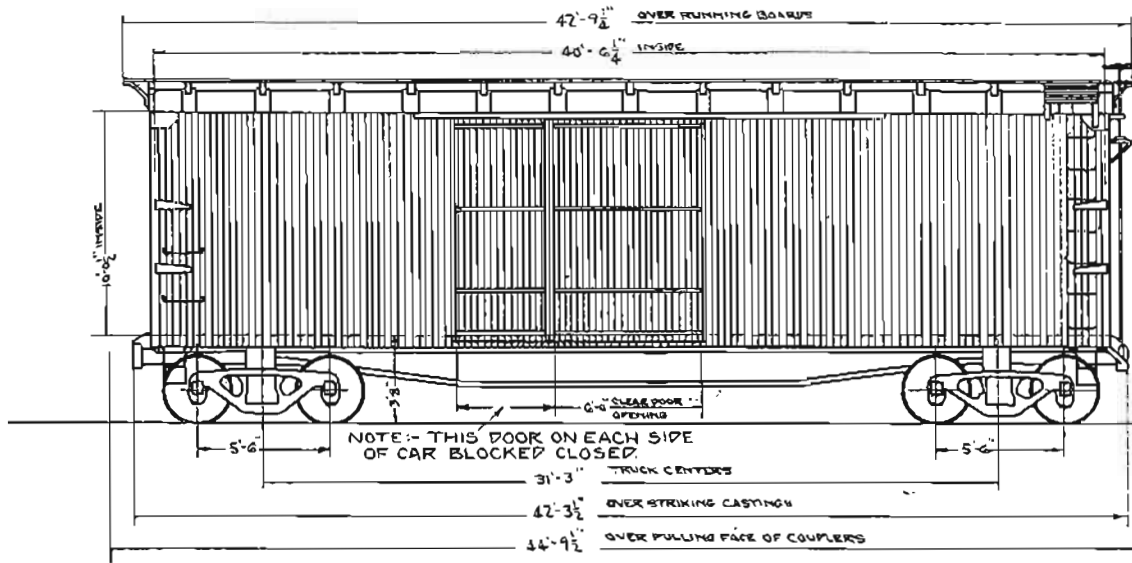
GENERAL DATA		MISCELLANEOUS	
BUILT BY ILL. CAR & MFG. CO.	CENTER SILL - SHAPES & PLATES	SIDE BEARING CENTERS - 5'-0"	TRUCK DATA
YEAR BUILT - 1924	CENTER SILL AREA - 1831 SQ. IN.	SWEATHING - 1 1/2" WOOD	
CAPACITY LEVEL FULL CU FT - 3471	CENTER SILL COVER PLATE 1/4" X 3"	SUPERSTRUCTURE - WOOD	BOLSTER - CAST STEEL - PATT. A-911
CAPACITY WITH 10 IN. HEAD CU FT	COUPLER - ARA TYPE "O" 6" X 8"	UNDERFRAME - BUILT UP STEEL	BRAKE BEAM - ARA No. 7 - DAMASCUS
AVERAGE LOAD LIMIT LBS. - 87900	COUPLER RELEASE RIGGING - IMPERIAL TYPE		BRAKE BEAM SAFETY - CRECO-A POINT
AVERAGE LIGHT WEIGHT LBS. - 46100	DOOR - WOOD		CENTER PLATE - CAST INTEGRAL
BUILDERS REFERENCE	DOOR FIXTURES - CAMEL		GENERAL DRAWING OF TRUCK NO.
M. M. SPEC. NO.	DOOR CLEAR OPENING 6'-0" W. 9'-5" H.		JOURNAL - 5 X 9
	DRAFT GEAR ATTACHMENT PARLAW 2 KEY		SIDE BEARING - WOODS PLATE
	ENDS - MURPHY		SIDE FRAME - CAST STEEL - INT. BOX
	END LOAD RATIO .044		SPRING - ARA TYPE C
	FLOORING 3/4" YELLOW PINE - T. & G.		WHEELS - 33" DIA. CAST IRON
	GENERAL DRAWING OF CAR NO. 139-11-177		WEIGHT OF ONE TRUCK
	WIND BRAKE - WHEEL & SHAFT		CENTER PLATE HEIGHT - 2'-1 1/8"
	LINING END - 1 3/4" T. & G.		
	LINING SIDE 1 3/4" WOOD FLOOR TO SIDE PLATE		
	ROOF - HUTCHINS		

CAR BODY DATA	
AIR BRAKE MFG. - N.Y. & O. CO.	
AIR BRAKE SCHEDULE - MC101	
BODY BOLSTER - BUILT UP STEEL	
BODY CENTER - LATE - CAST STEEL - PATT. A-911	
BODY SIDE BEARING - WOODS T&G ROLLER	
CARLINGS - PRESSED STEEL	

CLASS		CARS	
40 TON BOX		12000-12999	
<b>N.K.P.</b>			
ADVISORY MECHANICAL COMMITTEE CLEVELAND OHIO MAR. 31, 1933.			
REVISIONS		GROUP NO.	SHEET NO.
BY	DATE	3	4
J.T.	5/19/37		



THIS DIAGRAM SHOWS CARS CONVERTED FROM 19000-19999 SERIES. OTHER CARS IN THIS SERIES WERE TAKEN FROM 20000-20999 AND ARE SHOWN ON DIAGRAM-GROUP-3 SHEET-4.

GENERAL DATA		MISCELLANEOUS	
BUILT BY ILL. CAR & MFG. CO.	CENTER SILL - BUILT UP STRIPS AND PLATE	NOT BEARING CENTERS 5'-0"	TRUCK DATA BOLSTER - CAST STEEL - PATT A-711 WHEEL RIM - DAMASCUS No. 3 WHEEL RIM SAFETY 1" X 2" X 5/8" ANGLE CENTER PLATE - CAST INTEGRAL GENERAL DRAWING OF TRUCK NO. JOURNAL 529 SIDE BEARING - WOODS PLATE SIDE FRAME - CAST STEEL - INT BOX SPRING - ARA TYPE C WHEELS - 33" DIA. CAST IRON WEIGHT OF ONE TRUCK - 7200 LBS. CENTER PLATE HEIGHT 2' 2"
YEAR BUILT - 1923	CENTER SILL AREA - 15.88 SQ. IN.	WEATHENING 1 1/2" WOOD	
CAPACITY LEVEL FULL CU YD - 3471	CENTER SILL EDGE PLATE 1/4" X 2"	SLIPPER STRUCTURE - WOOD	
CAPACITY WITH 18 IN. HEAD CU YD	COUPLER - ARA TYPED Q & R	UNDERFRAME - BUILT UP STEEL	42000-12099 CLASS CARS 40 TON BOX
AVERAGE LOAD LIMIT LBS. - 90500	COUPLER RELEASE RIGGING - IMPROV. TYPE "B"		
AVERAGE LIGHT WEIGHT LBS. - 48500	DOOR - WOOD		N.K.P. ADVISORY MECHANICAL COMMITTEE CLEVELAND, OHIO APRIL 4, 1933
BUILDER'S REFERENCE R. R. SPEC. NO.	DOOR FIXTURES - CAMP		
	DOOR CLEAN OPENING 6'-0" WIDE 9'-4 1/2" HIGH		REV. 18 12/1/33 CJ T
	DOOR HINGE - BURROUGHS MINERALS 3/4" MAY. M & A		
	DOOR HINGE STRUTTING - FARNOW & KEY		REVISIONS DW TR CH GROUP NO. SHEET NO. CJ T CJ T W 3 5
	ENDS - HUTCHING AND STEEL		
	END LOAD WATIO - 0.29		
	FLOORING 1 1/2" YELLOW PINE T & G		
	GENERAL DRAWING OF CAR NO.		
	HAND BRAKE - WHEEL & STAFF		
	LIMIT END - 1 3/4" T & G		
	LINING SIDE 13/16" T & G		
	ROOF - MURPHY & HUTCHING		